

# AIR WRAP HAND GUN APSG10

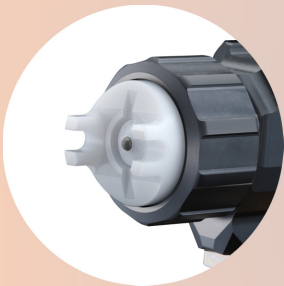
## AIR WRAP UNIT SP1021AW · SP1628AW

The variation of three air caps realize  
 higher transfer efficiency and quality of finish  
 Applicable to large flow rate



### Finishing type (AN-F)

The good performance of atomization provides high quality finish like air spray gun.



### High coat type (AN-S)

The transfer efficiency on large-sized object from far spray is improved due to high straightness.



### Large flow rate type (AN-P)

That is suited to high viscosity and thick film coating and reduce overspray in outdoor coating.

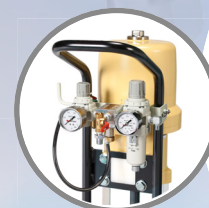


### Maintenance

Summarized main parts makes easier disassemble for maintenance.

### Gun Filter

The built-in filter prevents nozzle clogging by removing dust in the paint.



Internal air wrap regulator

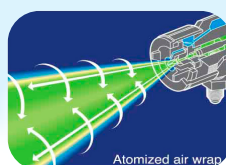


SP1628AW



### Aiming at eco-friendly and human-friendly coating

"Ec'Coater" is formed from the words "Ecology" and "Coater(coating machine)". "Ec'Coater" represents our concept born through our corporate principle.



### WHAT IS AIR WRAP COATING?

Air wrap coating is coating system using assist air and wrap air. Assist air promote paint atomization. Wrap air reduce scattering paint mist by wrapping discharged paint. These airs realized beautiful finishing and high transfer efficiency.

# AIR WRAP HAND GUN / AIR WRAP UNIT

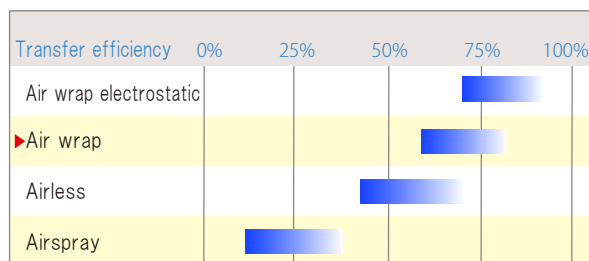
## SPECIFICATION

### ● HAND GUN

Model No.	APSG10	
Paint pressure	Regular	2~16MPa
	Max	21MPa
Wrap air pressure	Regular	0.2~0.5MPa
	Max	0.6MPa
Air consumption(Max)	350L/min(ANR)	
Length	205mm	
Weight	495g	



## SAVE ING COST AND RESOURCES



※Transfer efficiency may differ due to various conditions.  
The value above should only as a guide.

### ● AIR WRAP UNIT

Model No.	SP1021AW	SP1628AW
Pressure ratio	1:23	1:30
Paint pressure(Max)	11.5MPa	15MPa
Flow rate(Max)	4L/min	6.8L/min
Primary side air pressure(Max)	0.6MPa	
Dimensions(W×D×H)	315×400×750mm	350×505×919mm
Weight	15kg	33kg



## STANDARD COMPONENTS

Pump unit	SP1021AW or SP1628AW
Spray gun	APSG10
Air cap set	See the below table.
Paint hose	NSR06050
	NH03050
Air hose	591-3100
Medium joint	3202-232

## AIR CAP SET

Model No.	AN-F1	AN-F2	AN-S3	AN-S4	AN-S5	AN-P6	AN-P7	AN-P8
Parts No.	15C5	15C5-1	15C3	15C3-1	15C3-2	15C1	15C1-1	15C1-2
Specification	Finishing		High coat			Large flow rate		
Pattern width(mm)	150~200		120~170		150~200	200~250	250~300	
Flow rate(mL/min)	300~500	400~650	550~800	650~950	900~1,350	1,300~2,000	1,900~2,600	2,900~3,900
Equivalent diameter(mm)	0.28	0.32	0.36	0.4	0.48	0.59	0.69	0.83
Use example	High grade product Complex shaped object		Metallic product Construction/Machine tool			Thick anticorrosion Shipbuilding/Bridge		
Paint example	Metallic, Top coat		Two-pack urethane			Epoxy, Primer		

## ACCESSORIES

Part name	Part No.	Remarks
Gun Filter	1404 (1404-1) (1404-2)	#60 (#80) (#100)
Hose joint	1742-006	For converting paint inlet G 1/4 of gun.
Maintenance tool set	35F4	For Maintenance
Air hose(for large flow rate)	592-3100, 592-3200	10m, 20m



**⚠ Cautions for Safety** For correct and safe use of the equipment, please refer to Operation manual provided for it.

\*Appearances and specifications of the equipment shown on this booklet are subject to be changed for the purpose of its improvement, without pre-announcement.



## ASAHI SUNAC CORPORATION

Head Office & Factory  
5050 Asahimae-cho  
Owariasahi, Aichi Pref., 488-8688 Japan  
Tel: +81-561-52-0717  
Fax: +81-561-54-8847  
<http://www.sunac.co.jp>  
E-mail: [ctrd01@sunac.co.jp](mailto:ctrd01@sunac.co.jp)



©2010 Asahi Sunac Corporation. All Rights Reserved.  
Models and specifications are subject to change without notice.