

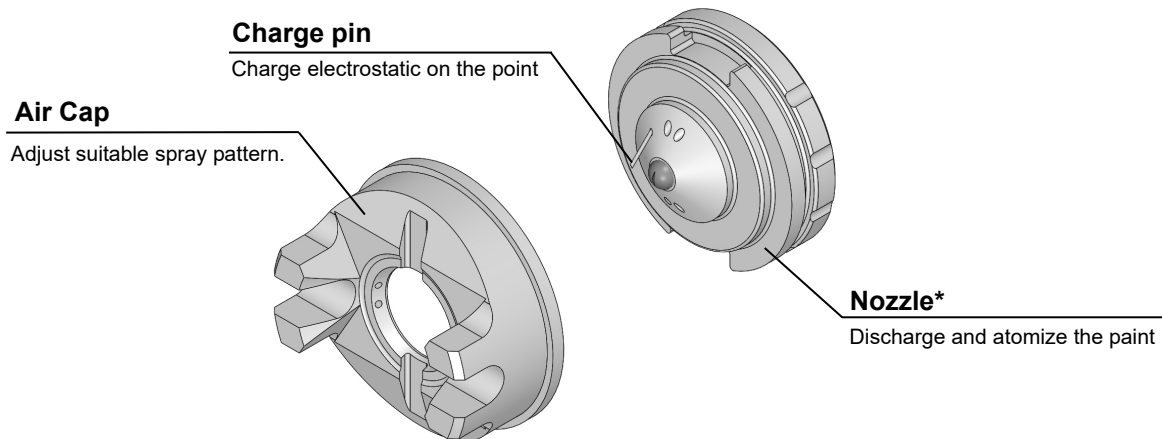
Air Cap Set EN series

1

Specification

1.1 Function of Air Cap Set

Attach on the top of the coating gun and atomize and form the pattern with air and pumping pressure.



* The Model of Air Cap Set and manufacturing date are written on the nozzle.

1.2 Specification of the parts

Model	EN-F1	EN-F2
Parts No.	15A3	15A3-1
Using Tip	07C07	09C07
Specification	Top coat type	
Appearance color	Black	
Pattern width (mm)	150~200	
Discharge (mL/min)*	300~500	400~650
Applicable Gun	APEG100/APEG100M/APEG26	

Model	EN-S3	EN-S4	EN-S5
Parts No.	15A1	15A1-1	15A1-2
Using tip	12C09	14C09	20C13
Specification	High coating efficiency type		
Appearance color	White		
Pattern width (mm)	120~170		150~200
Discharge (mL/min)*	550~800	650~950	900~1350
Applicable Gun	APEG100/APEG100M/APEG26		

Model	EN-P6	EN-P7	EN-P8
Parts No.	15A8	15A8-1	15A8-2
Using Tip	30C11	40C13	60C13
Specification	High discharge amount type		
Appearance color	Blue		
Pattern width (mm)	200~250	250~300	
Discharge (mL/min)*	1300~2000	1900~2600	2900~3900
Applicable Gun	APEG100/APEG100M/APEG26		

*Paint viscosity 20sec/FC#4, paint pressure 5~15MPa.

NOTES

About the pumping equipment, paint regulator and gun, please check the each manual.

1.3 Gun filter

The following table is recommended gun filter according to the model of Air Cap set. #60 gun filter is the standard but if nozzle clogging is occurred, replace the higher mesh gun filter.

When you use metallic paint, ask to the paint maker and make sure that the mesh size is suitable.

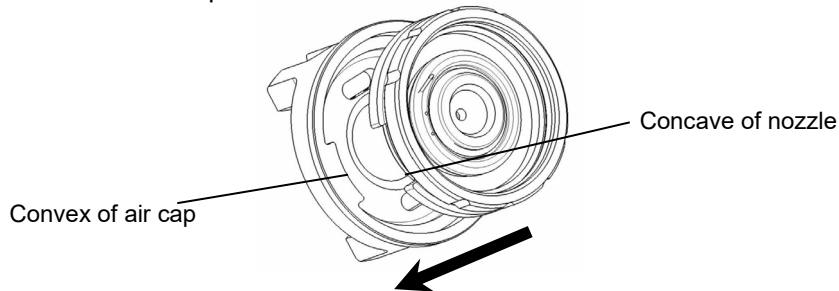
Model	EN-F1	EN-F2	EN-S3	EN-S4	EN-S5	EN-P6	EN-P7	EN-P8
Recommended gun filter	#100 (1404-2)							
# mesh	#80 (1404-1)							
(Parts No.)	#60 (1404) associated with gun							

2

Operation of Air Cap Set

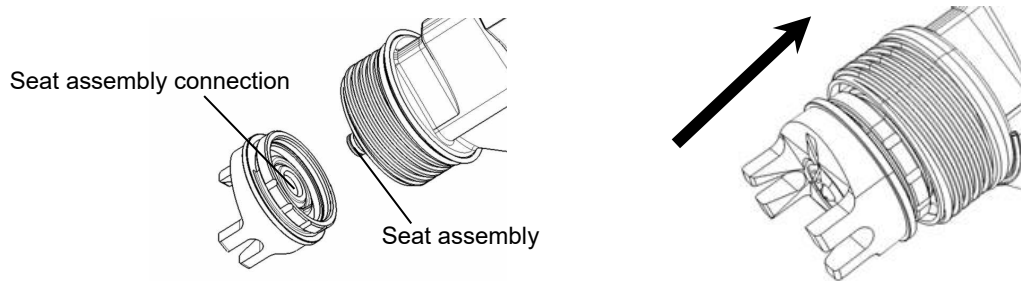
2.1 Installation of Air Cap Set

(1) Combine the convex of air cap and concave of nozzle.



(2) Attach the air cap set to seat assembly by hand.

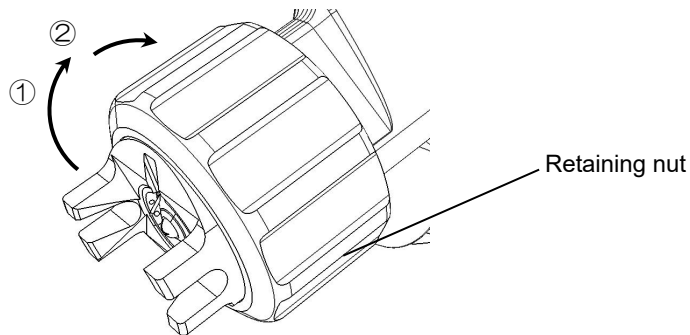
Take the point of gun down not to thinner or solvent come into gun body.



(2) Attach the retaining nut assembly from outside of air cap set.

After tighten the retaining nut assembly, adjust the direction of air cap and that of spray pattern.

Tighten more to lock the air cap set.



CAUTION

The following can cause break down in the equipment.

- Over tightening the retaining nut assembly (because that is made by plastic)
- Making the air cap fall down when you remove that.

Pay attention when you remove or put the air cap.

3








Maintenance

Check the following contents as daily inspection.

3.1 Check the spray pattern

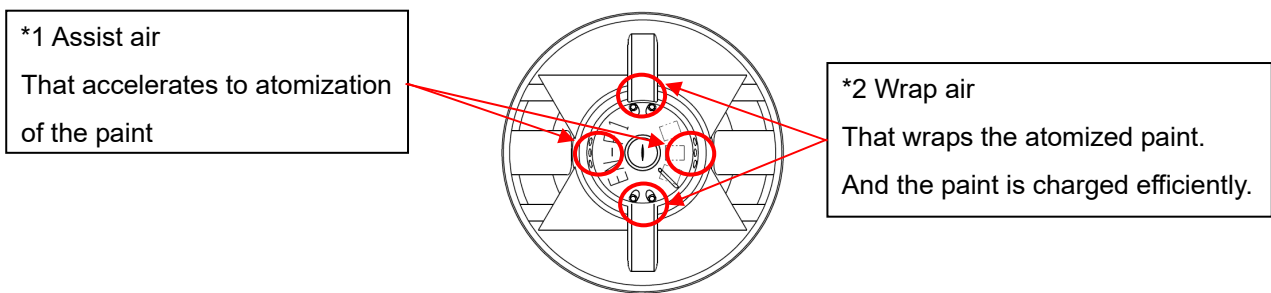
Spray to test piece before working, check that the spray pattern is not as followings.

According to the defective of using paint, several defectives can be occurred in one time.

Check point	Detail	Spray pattern image
1. Normal spray pattern	Spray pattern is uniform. There is no deep part.	
2. Deviation of spray pattern	There is too thick part either of the ends of spray.	
3. Curve of spray pattern	Spray pattern is curved.	
4. Inclination of spray pattern	Spray pattern incline from air cap direction more than 5%.	
5. Split of spray pattern	Too thick spray part split in each end of spray pattern.	
6. Spray particles are rough.	There are rough particles and center is too thick.	
7. Spray pattern is narrow.	The width is less than 90% of normal spray pattern.	

When the defective as the above is occurred, that can be caused by following reasons.

Spray pattern	Assist air *1			Wrap air *2			Nozzle tip			Liquid pressure	
	clogged	deform	Airflow	clogged	deform	Airflow	clogged	deform	Airflow	Low	High
2.Deviation	○	○		○	○		○	○	○		
3.Curve	○	○					○	○	○		
4.Inclination	○	○		○	○		○	○	○		
5.Split	○	○	small			small	○	○	○	○	
6.Rough particle	○	○	small					○	○	○	
7.Narrow	○	○	small	○	○	large	○	○	○	○	



Wearing down of Air cap or Nozzle tip can also cause some defectives.

3.2 Dirt on Air Cap Set

(1) Surface of Air Cap Set

When you find dirt on surface, wipe that by cloth or brush with washing solvent.

(2) Hole in Air Cap Set

When you find paint clogging in each hole of air cap, dip that to washing solvent and remove that with air blow.

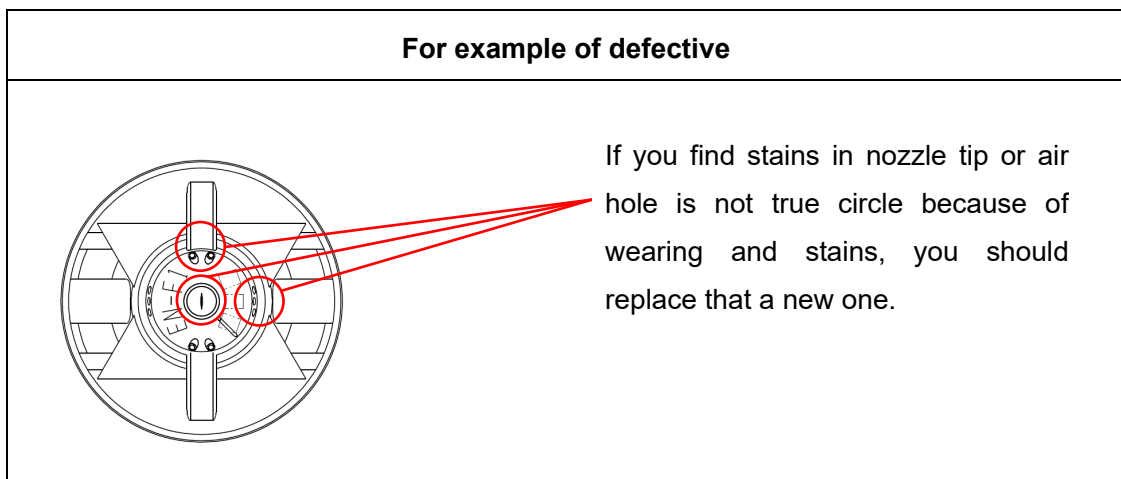
If you can't do that, replace with new one.

CAUTION

The following can cause break down in the equipment.

- Dipping the air cap to washing solvent for a long time
- Washing with brass brush (because the air cap is made by plastic)
- Washing the hole by using the pointed tool such as gimlet

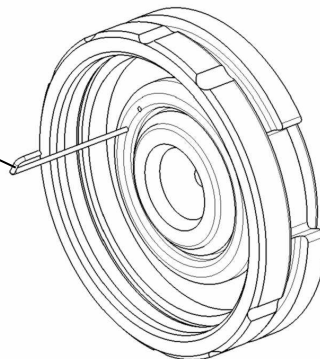
(3) Check the appearance of air cap



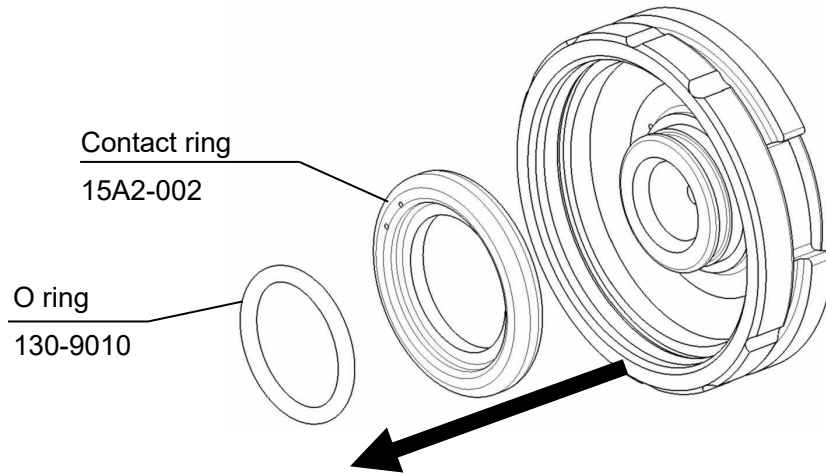
3.3 Replacement of nozzle parts

(1) Remove the charge pin from nozzle by using Needle-nose pliers.

Charge pin
15A2-003



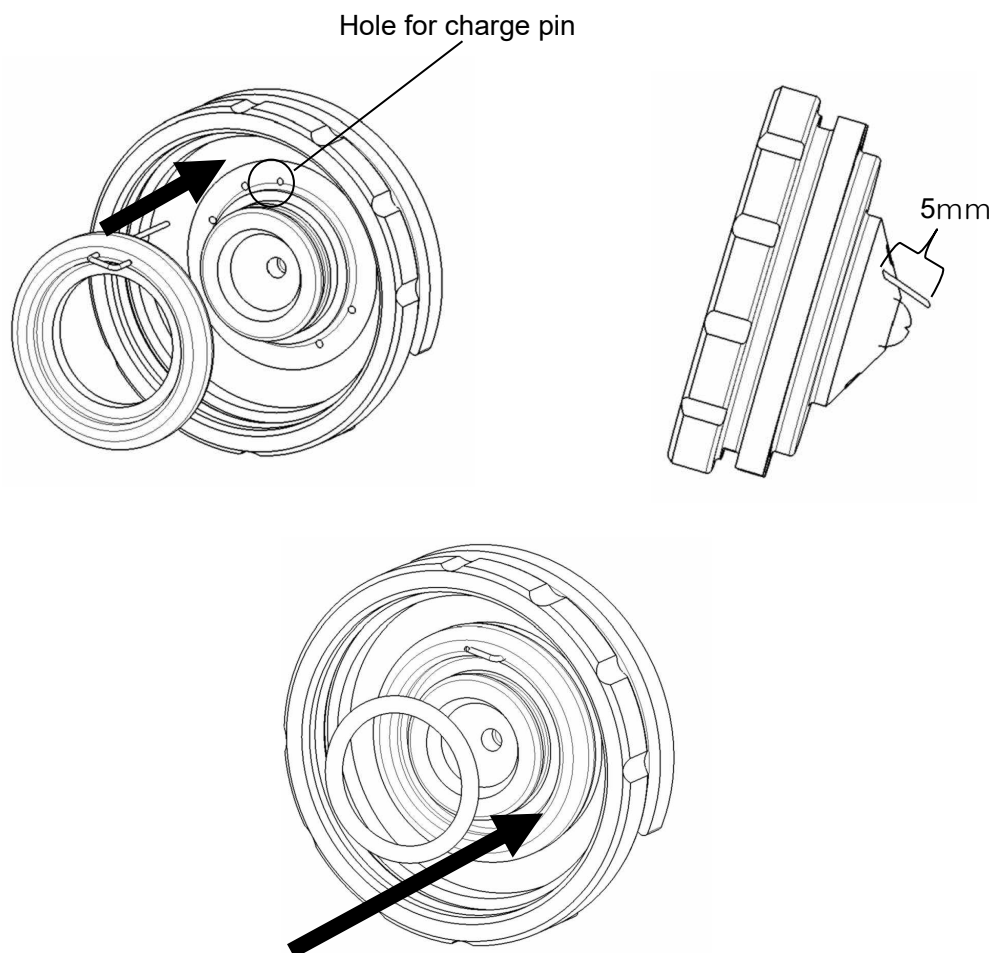
(2) Remove the O ring and pull out the contact ring by using hook reamer.



(3) Attach the replaced charge pin to the contact ring and insert the charge pin to the hole as below.

As a guide, the charge pin stick out about 5mm from air cap.

After that, attach the O ring.



4

Component

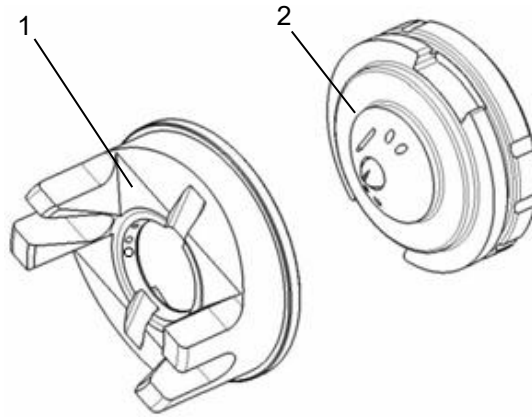
4.1 Air Cap Set

EN-F1

15A3

EN-F2

15A3-1



No.	Parts No.	Name	Qty.	Remarks
1	15A3-001	Air cap	1	common
2	15A4	Nozzle	1	F1
	15A4-1	Nozzle	1	F2

EN-S3

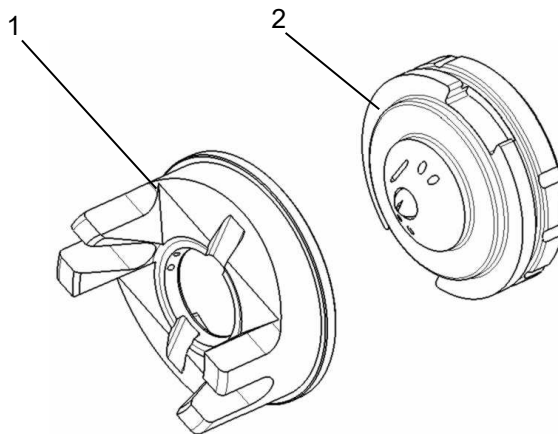
15A1

EN-S4

15A1-1

EN-S5

15A1-2

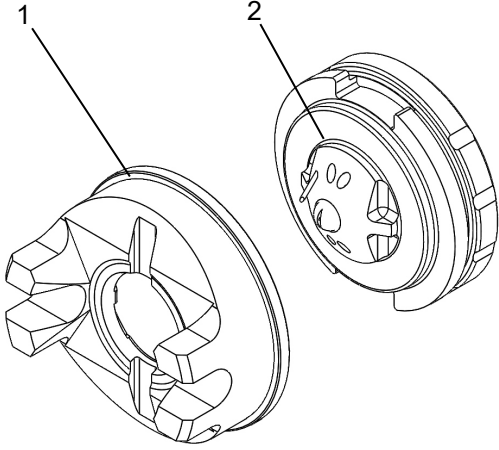


No.	Parts No.	Name	Qty.	Remarks
1	15A1-001	Air cap	1	common
2	15A2	Nozzle	1	S3
	15A2-1	Nozzle	1	S4
	15A2-2	Nozzle	1	S5

EN-P6
15A8

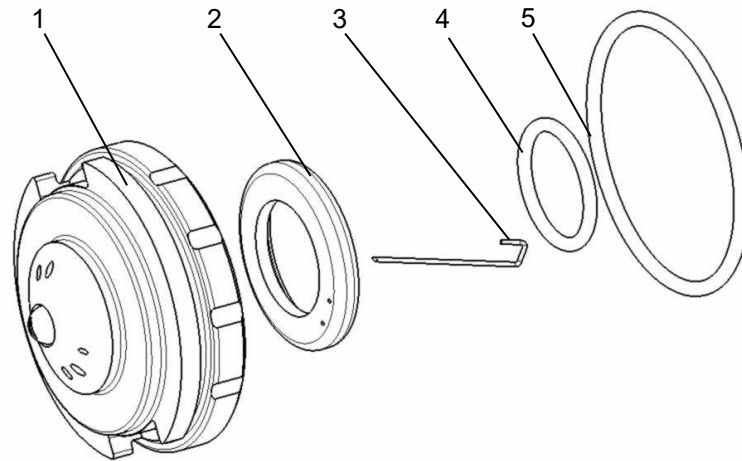
EN-P7
15A8-1

EN-P8
15A8-2



No.	Parts No.	Name	Qty.	Remarks
1	15C1-001	Air Cap	1	common
2	15A9	Nozzle	1	P6
	15A9-1	Nozzle	1	P7
	15A9-2	Nozzle	1	P8

4.2 Nozzle replacement parts (common in all nozzle)



No.	Parts No.	Name	Qty.	Remarks
1	—	Nozzle tip	1	*1
2	15A2-002	Contact ring	1	
3	15A2-003	Charge pin	1	
4	130-9010	O ring	1	
5	373-0013	Ring seal	1	*2

*1 Don't order only nozzle tip.

*2 When you remove the ring seal, be sure to replace that to new one because the parts tend to be damaged.

【MEMO】

【MEMO】

-
- When transferring this machine to another owner, attach the instruction manual to the machine.
 - This machine has been manufactured according to the laws and legislations of Japan and may only be used in Japan.

When using the machine in another country, it is necessary to observe the safety standards in that country.

6th Edition: July 16, 2021

ASAHI SUNAC CORPORATION

HEAD OFFICE
5050, SHINDENBORA, ASAHIMAE-CHO,
OWARIASAHI, AICHI PREF. 488-0852, JAPAN
PHONE +81-561-52-0717 FAX +81-561-54-8847

URL : www.sunac.co.jp
E-mail : ctrd01@sunac.co.jp

Sales office



English



Chinese

6th Edition: July 16, 2021