

Operation and Maintenance Manual

Handheld Airless Spray Gun

MG7



MG7 Specifications	
Structure	Needle type
Paint pressure	0 ~ 25 MPa
Weight	375 g



This manual contains important information on warnings and cautions. Read the manual thoroughly before starting to operate the airless spray gun, and follow the instructions.

Always keep the manual handy until such time as the pump is no longer being used. If your manual is lost or worn badly, do not hesitate to contact our agency which is closest to you, or the Asahi Sunac Corporation, directly, and ask us to send you a new one.

See that the gun is grounded.

See that the pump is grounded, as well.

Thank you very much for buying our product.

Before you use this equipment, please carefully read the Operation and Maintenance Manual.

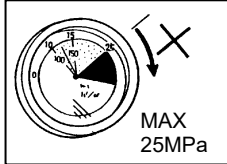
Please pay your extra attentions to the articles concerning safety warnings and cautions, so that you may be able to operate the equipment safely and in a way that you get the most out of it.

You must strictly follow the instructions given in the Manual: Failure to do so may result in injury to the operator or people around or damage to the equipment or objects in the spray area.

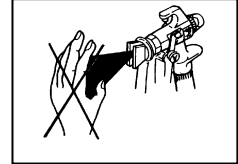
⚠ WARNING

Stay away from the high-pressure paint jetting out of a spray gun: serious injury may result if you come into contact with it.

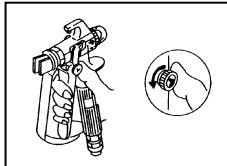
- ⊙ Use the gun at 25MPa paint pressure or lower. When you notice any abnormality, immediately bring the paint pressure down to 0MPa.



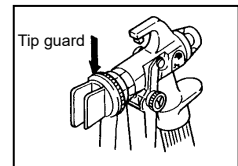
- ⊙ NEVER point the gun to yourself or others. NEVER attempt to close the nozzle by covering it with something you may be holding in your hand.



- ⊙ See that the trigger is locked:
 - When you do not conduct spraying operation
 - When you remove the nozzle from the gun



- ⊙ When using the equipment, ALWAYS have the tip guard installed in place. The tip guard is already mounted to the retaining nut when shipped from the factory. Put the nozzle into the retaining nut, and fasten the retaining nut securely with a special spanner.



When hit by high-pressure paint, never use band-aid treatment, but go directly to a specialist for a proper medical care. You must tell the doctor exactly what type of paint was being used when hit.

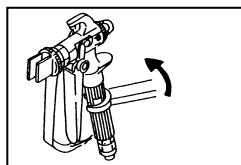
- ⊙ Never attempt to change or modify component parts on the gun.
- ⊙ Do not remove safety guard (Tip guard, Hand guard) during use.
- ⊙ Do not remove or take apart the nozzle or hose before relieving pressure.
- ⊙ When conducting spraying operation:
 - ALWAYS choose a place where a good ventilation system is available.
 - ALWAYS use a mask for breathing protection so that you may not inhale toxic gas from organic solvent.
 - ALWAYS use safety goggles to protect eyes from being exposed to toxic gas.
- ⊙ To prevent hazards associated with static electricity, ground all the pumps, painting objects, painting equipment and components that are used in the area. Failure to do so may result in electric shock or fire due to sparks that may be triggered by static electricity generated as paint flows.
- ⊙ When a seat housing O-ring (5) is worn or damaged, replace right away. If you don't, oil leakage and, perhaps, injury to the user may result.

<<Pressure relieving procedure>>

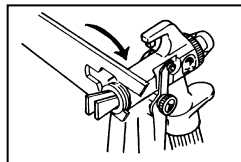
- ① Lock the trigger.
- ② Shut off the air source to the painting equipment (or power source/engine), stopping the pump.
- ③ Unlock the trigger, then pull it to bring the paint pressure down.
- ④ Relieve the drain valve, bringing the system pressure down to zero, then pull the trigger once more.
- ⑤ Lock the trigger, again.

Setting up

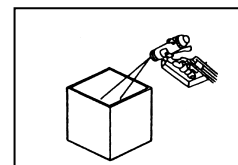
- ① See that the gun grip (2) is tightened in the following manner: Loosen the grip by hand and then retighten it securely with a spanner.



- ④ Choose a nozzle appropriate for the application and mount it on the tip of gun.

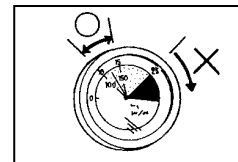


- ② Securely connect the paint hose to the spray gun and set paint pressure to 2 to 3MPa.



- ③ Before starting spraying operation, shoot some paint into an empty can without putting the nozzle on and see how it goes.

- ⑤ Conduct tryout spraying watching the way the spray is being formed. Adjust the paint pressure to the minimum required to perform the intended operation.



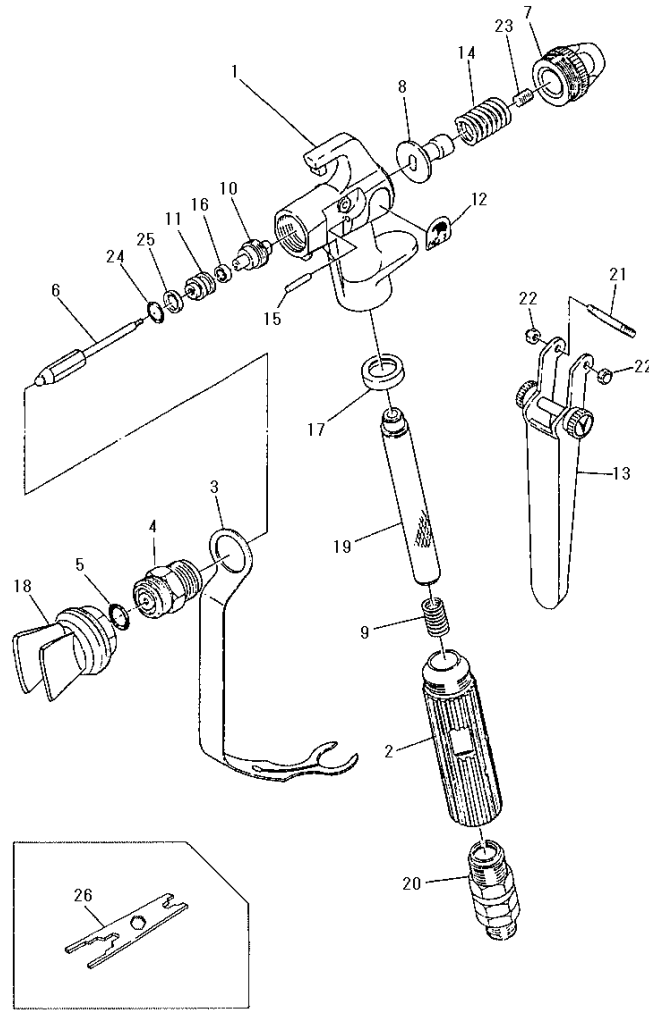
⚠ CAUTION

- Before mixing painting materials, please carefully read the instructions and precautions with regard to the paints and solvents.
- Supply paint at a temperature not exceeding 40°C.
- Always keep the nozzle clean. When operation is done, remove the nozzle and clean -- with the trigger locked.
- Never dip the gun into paint thinner bath. The gun lubricant gets diluted and packing deteriorated.
- Use a metal braided paint hose or one with embedded grounding wire.
- Before starting the equipment, check screws for looseness.

Exploded Diagram and Names of Parts

Handheld airless
spray gun

1294



Handheld airless spray gun MG7

No.	Parts No.	Name	Q'ty	Remarks
1	1294-001	Body	1	
2	1294-002	Grip	1	
3	1294-003	Hand guard	1	
*◆4	1294-005	Seat housing	1set	M18×1.5
*5	101-2009	O-ring	1	
*◆6	1294-006	Needle	1	
7	1294-007	End cap	1	
8	1294-008	Pusher	1	
9	1294-009	Spring	1	
10	1294-010	Packing retainer	1	
11	1294-011	Packing case	1	
12	1294-012	Name plate	1	
13	1294-013	Trigger set	1set	

No.	Parts No.	Name	Q'ty	Remarks
14	1294-014	Spring	1	
15	1294-015	Pusher pin	2	
*16	1294-016	U packing	1	
*17	1245-018	Packing	1	
18	1294-019	Tip guard ass'y	1set	
*19	1294-020	Screen filter	1	
*20	2933	Universal joint	1set	G 1/4
21	1294-022	Trigger pin	1	
22	28-10300	Hexagon cap nut	2	
23	1294-025	Set screw	1	
*24	101-6007	O-ring	1	
*25	153-2007	Backup ring	1	

* The items marked with * are those which we recommend you to keep in your inventory at all times.

◆ The replacement of seat housing (4) and needle (6) simultaneously is recommended because both of these are consumable parts. Especially, O-rings (5, 24) are the items you must replace each time you take the equipment apart and, for this reason, we recommend you to keep them in your inventory at all times.

The standard mesh for the filter (19) is #60. (#100 and #200 meshes are also available as optional items.)

Clean the filter before and after operation to prevent it from clogging.

If you find clogging occurs too often to the nozzle, we suggest you to replace the filter with one with a finer mesh.

■ Accessory tool

No.	Parts No.	Name	Q'ty	Remarks
26	3511-201	Special wrench (accessory tool)	1	

Note: The equipment specifications are subject to change without prior notice.

Troubleshooting

* The numbers in the parentheses () are taken from the exploded diagram.

Symptom	Probable cause	Remedy
No spraying	<ul style="list-style-type: none"> No paint being fed 	<ul style="list-style-type: none"> Inspect painting equipment
	<ul style="list-style-type: none"> Clogged nozzle 	<ul style="list-style-type: none"> With nozzle cleaner, remove dust and particles that are causing the nozzle to get clogged. <Nozzle-to-filter mismatch suspected> Chances are that mismatching between the nozzle size and the mesh-size of filter is causing the nozzle to get clogged. Change either the filter for one with a finer mesh or the nozzle for a larger sized one. Before using paint, strain it through a filter with a mesh size equivalent to or finer than the mesh size of the gun filter.
Spraying force too weak	<ul style="list-style-type: none"> Clogged filter (19) 	<ul style="list-style-type: none"> Clean or replace filter. (A similar cause to the above may be suspected in this case as well.)
Paint is leaking	<ul style="list-style-type: none"> Loosened packing retainer (10) 	<ul style="list-style-type: none"> Re-tighten.
	<ul style="list-style-type: none"> Worn "U" packing (16) 	<ul style="list-style-type: none"> Replace perishable parts.
	<ul style="list-style-type: none"> Broken backup ring (25) for O-rings (5) and (24) 	<ul style="list-style-type: none"> Replace perishable parts.
	<ul style="list-style-type: none"> Worn needle (6). (Replace if you find such damage to the needle as deep chafing, scratches, or dents.) 	<ul style="list-style-type: none"> Replace needle. (At the same time, packing replacement is also necessary.)
	<ul style="list-style-type: none"> Worn packing (17). Dust landed on the seat caused seating failure, causing paint leak from the tip of spray gun. (Worn seat or needle) 	<ul style="list-style-type: none"> Replace packing. Replace needle and seat housing. <Replacement criteria> No needle and seat housing replacement is necessary -- If the extent of damage is limited to a ring-like trace of contact on the ball at the tip of needle. A needle and seat housing replacement is necessary -- If the extent of damage is such that it involves deformation or excessive wear of the ring.
Poor spraying performance (Poor ON/OFF response with paint dripping endlessly)	<ul style="list-style-type: none"> Paint leak from universal joint (20) 	<ul style="list-style-type: none"> Replace universal joint.
	<ul style="list-style-type: none"> Needle (6) sticking 	<ul style="list-style-type: none"> Take it apart, clean and replace packing.
	<ul style="list-style-type: none"> Pusher pin (15) sticking 	<ul style="list-style-type: none"> Take it apart, clean and replace packing.
	<ul style="list-style-type: none"> Foreign material jammed in between needle (6) and seat housing (4) 	<ul style="list-style-type: none"> Take it apart and clean.
	<ul style="list-style-type: none"> Worn or damaged contacting surfaces between needle (6) and seat housing (4) 	<ul style="list-style-type: none"> Replace needle and seat.

Once part replacement or maintenance work is done, connect the equipment to the pump, gradually bring the pressure up using thinner as test fluid, and check to see if there is any leak from the system.

If you find any leak, take the equipment apart and check to see if there is any damage to the O-ring or if parts are put together the way they should. If everything is OK, put them back together.

NEVER attempt to conduct maintenance work in any way contrary to the procedure described in the Operation and Maintenance Manual.

- When the transfer of title takes place with regard to this equipment, the Operation and Maintenance Manual should be handed over to the new owner together with the equipment.
- The equipment is built to the Japanese regulatory requirements for use within Japan. When the equipment is to be used outside Japan, modifications may be necessary to make it compatible with the regulatory requirements and safety standards of the country in which it will be used.

12th Edition: June 25, 2025

ASAHI SUNAC CORPORATION

HEAD OFFICE
5050, SHINDENBORA, ASAHIMAE-CHO,
OWARIASAHI, AICHI PREF. 488-0852, JAPAN
PHONE +81-561-52-0717 FAX +81-561-54-8847

URL : www.sunac.co.jp
E-mail : ctrd01@sunac.co.jp

Sales office



English



Chinese

12th Edition: June 25, 2025