

Operation and Maintenance Manual

Handheld Airless Spray Gun

MG7II



MG7 II Specifications	
Structure	Needle type
Paint pressure	0 ~ 35 MPa
Weight	360 g

This manual contains important information on warnings and cautions. Read the manual thoroughly before starting to operate the airless spray gun, and follow the instructions. Always keep the manual handy until such time as the pump is no longer being used. If your manual is lost or worn badly, do not hesitate to contact our agency which is closest to you, or the Asahi Sunac Corporation, directly, and ask us to send you a new one. See that the gun is grounded. See that the pump is grounded, as well.



Thank you very much for buying our product.

Before you use this equipment, please carefully read the Operation and Maintenance Manual.

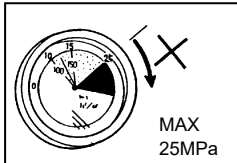
Please pay your extra attentions to the articles concerning safety warnings and cautions, so that you may be able to operate the equipment safely and in a way that you get the most out of it.

You must strictly follow the instructions given in the Manual: Failure to do so may result in injury to the operator or people around or damage to the equipment or objects in the spray area.

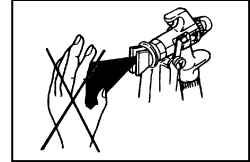
⚠ WARNING

Stay away from the high-pressure paint jetting out of a spray gun: serious injury may result if you come into contact with it.

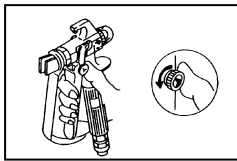
- ⊙ Use the gun at 25MPa paint pressure or lower. When you notice any abnormality, immediately bring the paint pressure down to 0MPa.



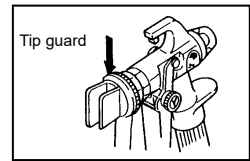
- ⊙ NEVER point the gun to yourself or others. NEVER attempt to close the nozzle by covering it with something you may be holding in your hand.



- ⊙ See that the trigger is locked:
 - When you do not conduct spraying operation
 - When you remove the nozzle from the gun



- ⊙ When using the equipment, ALWAYS have the tip guard installed in place. The tip guard is already mounted to the retaining nut when shipped from the factory. Put the nozzle into the retaining nut, and fasten the retaining nut securely with a special spanner.



When hit by high-pressure paint, never use band-aid treatment, but go directly to a specialist for a proper medical care. You must tell the doctor exactly what type of paint was being used when hit.

- ⊙ Never attempt to change or modify component parts on the gun.
- ⊙ Do not remove safety guard (Tip guard, Hand guard) during use.
- ⊙ Do not remove or take apart the nozzle or hose before relieving pressure.
- ⊙ When conducting spraying operation:
 - ALWAYS choose a place where a good ventilation system is available.
 - ALWAYS use a mask for breathing protection so that you may not inhale toxic gas from organic solvent.
 - ALWAYS use safety glasses to protect eyes from being exposed to toxic gas.
- ⊙ To prevent hazards associated with static electricity, ground all the pumps, painting objects, painting equipment and components that are used in the area. Failure to do so may result in electric shock or fire due to sparks that may be triggered by static electricity generated as paint flows.
- ⊙ When a seat housing O-ring (4) is worn or damaged, replace right away. If you don't, oil leakage and, perhaps, injury to the user may result.

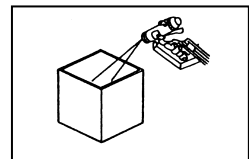
<<Pressure relieving procedure>>

- ① Lock the trigger.
- ② Shut off the air source to the painting equipment (or power source/engine), stopping the pump.
- ③ Unlock the trigger, then pull it to bring the paint pressure down.
- ④ Relieve the drain valve, bringing the system pressure down to zero, then pull the trigger once more.
- ⑤ Lock the trigger, again.

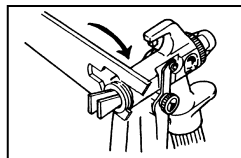
Setting up

- ① Securely connect a paint hose to the spray gun and set paint pressure to 2 to 3MPa.

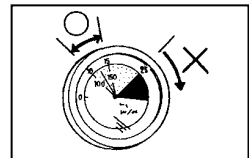
- ② Before starting spraying operation, shoot some paint into an empty can without putting the nozzle on and see how it goes.



- ③ Choose a nozzle appropriate for the given application and mount it onto the tip of gun. Don't forget to put a gasket on at the same time.



- ④ Conduct tryout spraying watching the way the spray is being formed. Adjust the paint pressure to the minimum required to perform the intended operation.



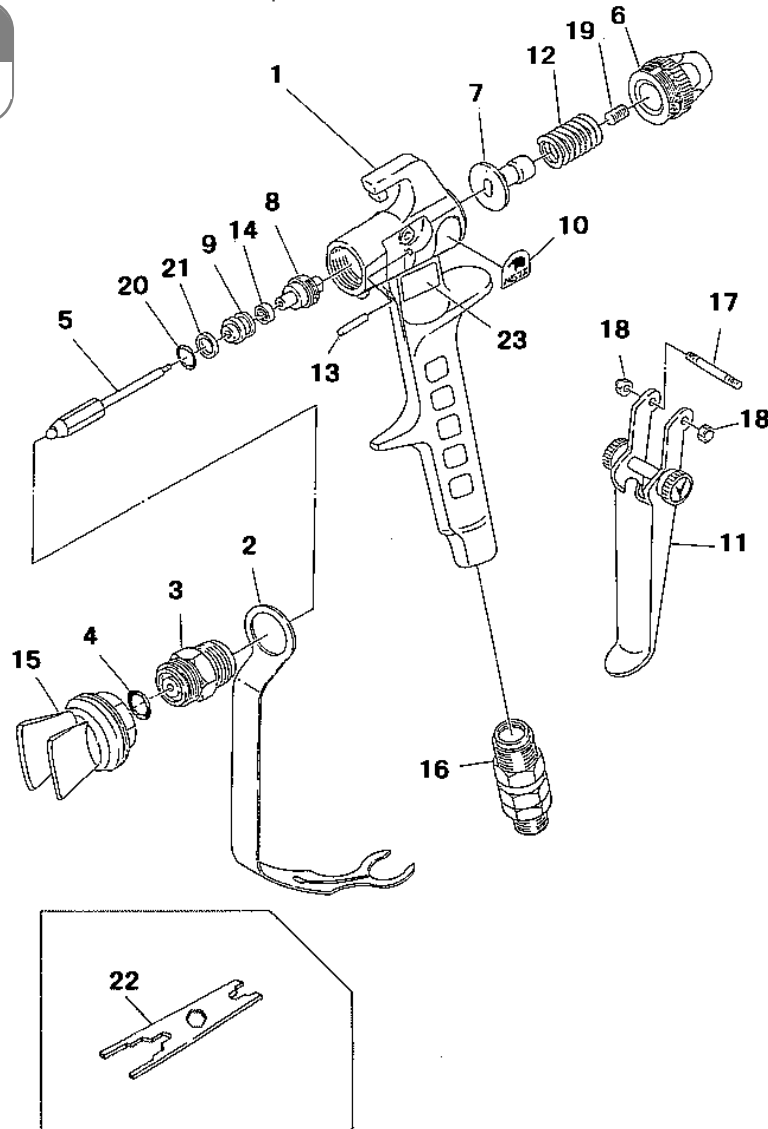
⚠ CAUTION

- Before mixing painting materials, please carefully read the instructions and precautions with regard to the paints and solvents.
- Supply paint at a temperature not exceeding 40°C.
- Always keep the nozzle clean. When operation is done, remove the nozzle and clean -- with the trigger locked.
- Never dip the gun into paint thinner bath. The gun lubricant gets diluted and packing deteriorated.
- Use a metal braided paint hose or one with embedded grounding wire.
- Before starting the equipment, check screws for looseness.

Exploded Diagram and Names of Parts

Handheld airless
spray gun

1297



Handheld airless spray gun MG7II

No.	Parts No.	Name	Q'ty	Remarks
1	1297-001	Body	1	
2	1294-003	Hand guard	1	
*◆3	1294-005	Seat housing	1set	
*4	101-2009	O-ring	1	
*◆5	1294-006	Needle	1	
6	1294-007	End cap	1	
7	1294-008	Pusher	1	
8	1294-010	Packing retainer	1	
9	1294-011	Packing case	1	
10	1297-012	Name plate	1	
11	1297-013	Trigger set	1set	

No.	Parts No.	Name	Q'ty	Remarks
12	1294-014	Spring	1	
13	1294-015	Pusher pin	2	
*14	1294-016	U packing	1	
15	1294-019	Tip guard assy	1set	
*16	2933	Universal joint	1set	
17	1294-022	Trigger pin	1	
18	28-10300	Hexagon cap nut	2	
19	1294-025	Set screw	1	
*20	101-6007	O-ring	1	
*21	153-2007	Backup ring	1	
23	5241-002	Name plate: Spraying	1	

* The items marked with * are those which we recommend you to keep in your inventory at all times.

Especially, O-rings (4, 20) are the items you must replace each time you take the equipment apart and, for this reason, we recommend you to keep them in your inventory at all times.

◆ The replacement of Seat housing (3) and Needle (5) simultaneously is recommended because both of these are consumable parts.

■ Accessory tool

No.	Parts No.	Name	Q'ty	Remarks
22	3511-201	Special wrench (accessory tool)	1	

Note: The equipment specifications are subject to change without prior notice.

Troubleshooting

* The numbers in the parentheses () are taken from the exploded diagram.

Symptom	Probable cause	Remedy
No spraying	<ul style="list-style-type: none"> No paint being fed 	<ul style="list-style-type: none"> Inspect painting equipment
	<ul style="list-style-type: none"> Clogged nozzle 	<ul style="list-style-type: none"> Clean or replace filter.
Paint is leaking	<ul style="list-style-type: none"> Loosened packing retainer (8) 	<ul style="list-style-type: none"> Re-tighten.
	<ul style="list-style-type: none"> Worn U packing (14) 	<ul style="list-style-type: none"> Replace perishable parts.
	<ul style="list-style-type: none"> Broken backup ring (21) for O-rings (4) and (20) 	<ul style="list-style-type: none"> Replace perishable parts.
	<ul style="list-style-type: none"> Worn needle (5). (Replace if you find such damage to the needle as deep chafing, scratches, or dents.) 	<ul style="list-style-type: none"> Replace needle. (At the same time, packing replacement is also necessary.)
	<ul style="list-style-type: none"> Paint leak from universal joint (16) 	<ul style="list-style-type: none"> Replace universal joint.
Poor spraying performance (Poor ON/OFF response with paint dripping endlessly)	<ul style="list-style-type: none"> Needle (5) sticking 	<ul style="list-style-type: none"> Take it apart, clean and replace packing.
	<ul style="list-style-type: none"> Pusher pin (13) sticking 	<ul style="list-style-type: none"> Take it apart, clean and replace packing.
	<ul style="list-style-type: none"> Foreign material jammed in between needle (5) and seat housing (3) 	<ul style="list-style-type: none"> Take it apart and clean.
	<ul style="list-style-type: none"> Worn or damaged contacting surfaces between needle (5) and seat housing (3) 	<ul style="list-style-type: none"> Replace needle and seat.

Once part replacement or maintenance work is done, connect the equipment to the pump, gradually bring the pressure up using thinner as test fluid, and check to see if there is any leak from the system.

If you find any leak, take the equipment apart and check to see if there is any damage to the O-ring or if parts are put together the way they should. If everything is OK, put them back together.

NEVER attempt to conduct maintenance work in any way contrary to the procedure described in the Operation and Maintenance Manual.

- When the transfer of title takes place with regard to this equipment, the Operation and Maintenance Manual should be handed over to the new owner together with the equipment.
- The equipment is built to the Japanese regulatory requirements for use within Japan. When the equipment is to be used outside Japan, modifications may be necessary to make it compatible with the regulatory requirements and safety standards of the country in which it will be used.

10th Edition: June 30, 2022

ASAHI SUNAC CORPORATION

HEAD OFFICE
5050, SHINDENBORA, ASAHIMAE-CHO,
OWARIASAHI, AICHI PREF. 488-0852, JAPAN
PHONE +81-561-52-0717 FAX +81-561-54-8847

URL : www.sunac.co.jp
E-mail : ctrd01@sunac.co.jp

Sales office



English



Chinese

10th Edition: June 30, 2022