

# Operation and Maintenance Manual

## AIRLESS HAND GUN POLE GUN

PMG IV  
PMG IVS



【PMGIV】  
Fiberglass has been rolled by Paul.



【PMGIVS】  
Stainless specification

PMGIV • IVS Specifications	
Structure	Tip needle valve method
Paint Pressure	0~25MPa



This manual contains important information on warnings and cautions. Read the manual thoroughly before using the airless automatic gun, and follow the instructions. The pump body should be grounded. Always keep the manual handy until such time as the equipment is no longer being used. If your manual is lost or worn badly, do not hesitate to contact our agency which is closest to you, or the Asahi Sunac Corporation, directly, and ask us to send you a new one.

Thank you for buying our product.

Please pay particular attention to major specifications, warnings and precautions, including prohibited items. Use the equipment appropriately and with care, following the instructions.

## WARNING

**High-pressure paint sprayed from a spray gun may cause injury to human body and skin if it comes into contact.**

- ① Please use this gun at pressure under 25MPa.



- ② Never point the gun towards yourself or any others. Also never cover the nozzle tip with your hands, fingers or anything in your hand.



Whenever you change the direction of swivel head you should turn it with your hands.

(Do not turn the swivel head by such a way of tapping it against pillar, ceiling or other things.)

- ③ When you not spray and remove a nozzle from gun, please be sure to lock to a trigger.

- ④ Always put tip guard on the gun. The tip guard is set ready to use on the retaining nut. Put the nozzle on and tighten the retaining nut using spanners.

**Using pole with deform or damage may cause damage of gun during using and resulting injure.**

**If you are hit by the paint spray under high pressure, do not get home treatment but immediately see a medical specialist. You need to notify him or her of the exact type of the paint used.**

- ① Never attempt to change or modify component parts on the gun.
- ② Do not remove safety guard (Tip guard, Hand guard) during use.
- ③ Do not remove or overhaul the hose without reducing the pressure.
- ④ When spraying the paint, always wear a mask not to inhale poisonous gases such as vapor of an organic solvent and wear protective glasses to protect your eyes from such gases.
- ⑤ To prevent hazards associated with static electricity, ground all the pumps, painting objects, painting equipment and components that are used in the area. Otherwise, static electricity will be generated by the paint flow in the coating equipment to cause sparks, possibly resulting in electric shock and/or fire.

### 《Pressure reduction procedure》

- ① Lock the trigger.
- ② Shut off the air supply (or power supply or engine) to the coating equipment to stop the pump.
- ③ Unlock the trigger and pull the trigger to reduce the paint pressure.
- ④ Open the drain valve, reduce the pressure throughout the system to zero and pull the trigger again.
- ⑤ Lock the trigger again.

## OPERATION

- ① Check loosen of fittings before filling paint.
- ② Spray at low pressure for a while before setting nozzle tip and filter.
- ③ Pull the trigger quickly since too slow pulling action may cause spitting of paint.
- ④ In spraying work, move spray gun parallel to the surface of the object at a constant speed as possible. Keep nozzle at the distance of 25~30cm from the object.

## CAUTION

- When mixing the paint, thoroughly read instructions for the paint and solvent.
- Keep the nozzle and its vicinity clean. At the completion of work, remove and wash the nozzle. If paint is find adhered around the swivel head, it must be washed off cleanly. Never fail to lock the trigger during cleaning.
- Never immerse the gun wholly in paint thinner. Doing so removes the lubricant, resulting in damage to the packing.
- For the paint hose, use a metal braid shielded or grounded hose.

## WARNING

- Do not bring the gun close to electrical part during spraying. There is danger of spark.
- Do not burn paint to remove sticked paint outside of gun. The glass fiber may be damaged.
- Do not use sharp tool to remove sticked paint outside of gun. The glass fiber may be damaged.
- The gun may be damaged if drop from high position or hit strongly.

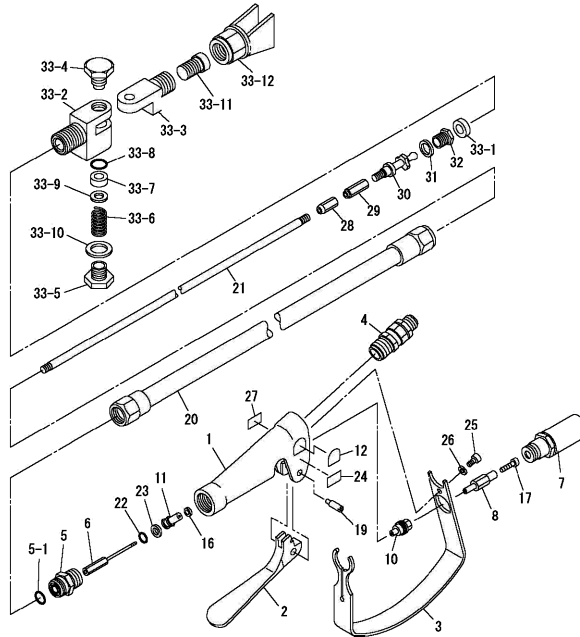
# Exploded Diagram and Names of Parts

PMGIV

1209-□

PMGIVS

1212-□



## WARNING

Retaining nut with guard protects operator from getting injured by high-pressure fluid. Always install the chip guard when spraying.

### POLE GUN

PMGIV : <1209-1>1ft(0.3m), <1209-7>1.4ft(0.4m), <1209-2>2ft(0.6m), <1209-8>2.7ft(0.8m), <1209-3>3ft(0.9m), <1209-4>4ft(1.2m), <1209-5>5ft(1.5m), <1209-6>6ft(1.8m)

PMGIVS: <1212-1>1ft(0.3m), <1212-7>1.4ft(0.4m), <1212-2>2ft(0.6m), <1212-8>2.7ft(0.8m), <1212-3>3ft(0.9m), <1212-4>4ft(1.2m), <1212-5>5ft(1.5m), <1212-6>6ft(1.8m)

[Upper : PMGIV Lower : PMGIVS]

No.	Part No.	Part Name	Q'ty	Remark		
1	1209-001	Body	1			
2	1209-002	Trigger	1			
3	1209-003	Hand guard	1			
4	2936	Universal joint	1set			
5	1240-005	Nipple	1			
※5-1	101-2009	O-ring	1			
6	1209-006	Needle	1			
7	1209-090	Stopper Set	1			
8	1209-008	Joint	1			
9	Nil					
10	1209-010	Packing retainer	1			
11	1209-011	Packing case	1			
12	1209-012 1212-012	Name plate	1			
13	Nil					
14	Nil					
15	Nil					
※16	1294-016	U-packing	1			
17	1209-017	Screw	1			
18	Nil					
19	1209-019	Screw	1			
20	1240-129 1212-129	Pole	1	1ft(0.3m)		
	1240-729 1212-729			1.4ft(0.4m)		
	1240-229 1212-229			2ft(0.6m)		
	1240-829 1212-829			2.7ft(0.8m)		
	1240-329 1212-329			3ft(0.9m)		
	1240-429 1212-429			4ft(1.2m)		
	1240-529 1212-529			5ft(1.5m)		

No.	Part No.	Part Name	Q'ty	Remark
20	1240-629	Pole	1	6ft(1.8m)
	1212-629			
21	1240-130	Rod	1	1ft(0.3m)
	1240-730			1.4ft(0.4m)
	1240-230			2ft(0.6m)
	1240-830			2.7ft(0.8m)
	1240-330			3ft(0.9m)
	1240-430			4ft(1.2m)
	1240-530			5ft(1.5m)
	1240-630	6ft(1.8m)		
※22	101-6007	O-ring	1	
※23	153-2007	Back-up ring T	1	
24	5241-009	Name plate	1	
25	03-80408	Bolt	1	
26	41-80400	Spring washer	1	
27	5241-002	Name plate	1	
28	1240-028	Lock nut	1	
29	1240-031	Nut	1	
※30	1201-006	Needle shaft	1	
31	146-7010	Gasket	1	
※32	1203-020	Seat housing	1	
33	1408-5	Swivel set	1set	
※33-1	146-3003	Gasket	1	
33-2	1209-034	Swivel head	1	
33-3	1212-035	Head	1	
33-4	1240-038	Set bolt	1	
33-5	1209-037	Nut	1	
33-6	1209-038	Spring	1	
※33-7	147-2001A	Gasket	1	
※33-8	103-6006	O-ring	1	
33-9	37-10500	Plain washer	1	
33-10	146-7002	Gasket	1	
※33-11	1404	Gun filter	1set	#60
33-12	1240-046	Retaining nut with Guard	1	

Items marked with ※ are the parts we recommend you to carry in stock.

Note 1 : Nozzle is optional. Select and order a nozzle size and gun filter mesh #80(1404-1) and #100(1404-2) that best suite the fluid paint and surface to be painted.

Note 2 : The equipment specifications are subject to change without prior notice.

## Warranty

ASAHI SUNAC CORPORATION (the “Company”) shall provide the original purchaser (the “Purchaser”) with warranty service for a period of 6months from the date of purchase of the product, as follows:

- Should you find defects in design or workmanship with regard to parts, ship them back to the Company, with freight prepaid. The Company shall repair or replace the parts free of charge and reimburse the freight charges, provided that, as a result of an inspection and investigation of the parts conducted by the Company, the defects are deemed to be attributable to the factors within the Company’s responsibility.
- In the following cases, free after-sales service is not provided.
  1. Failure resulting from an inappropriate method of installing this equipment.
  2. Failure resulting from a use method not conforming to this instruction manual or mishandling.
  3. Failure resulting from insufficient maintenance management of this equipment and incorrect handling such as non-conformance to the procedures specified in this instruction manual.
  4. Failure resulting from unauthorized alteration or structure change of this equipment without the Company’s consent.
  5. Failure due to force majeure such as earthquake, disaster, flood disaster or lightning.
  6. Warranty for consumables worn or deteriorated even in the case where this equipment is used correctly.
  7. Repair after the machine has been used outside Japan, and shipping cost.
  8. In addition to the above, failure due to circumstances beyond our control.
- As for items such as parts purchased by the Company from another manufacturer, the warranty of that manufacturer shall apply.
- As for any parts deemed to be defective, the Company shall not be held liable for any expenses beyond the provision of repair or replacement parts free of charge.
- The Company shall not be held liable for any damage to the Purchaser caused by factors not attributable to the Company, such as misuse of product, etc.

- 
- When handing the equipment over to the next user, always attach this manual to the equipment.
  - When using the equipment in a country out of Japan, it is necessary to observe the safety standards in effect in that country.
- 

6th Edition: June 30, 2022

## ASAHI SUNAC CORPORATION

HEAD OFFICE  
5050, SHINDENBORA, ASAHIMAE-CHO,  
OWARIASAHI, AICHI PREF. 488-0852, JAPAN  
PHONE +81-561-52-0717 FAX +81-561-54-8847

URL : [www.sunac.co.jp](http://www.sunac.co.jp)  
E-mail : [ctrd01@sunac.co.jp](mailto:ctrd01@sunac.co.jp)

Sales office



English



Chinese

6th Edition: June 30, 2022