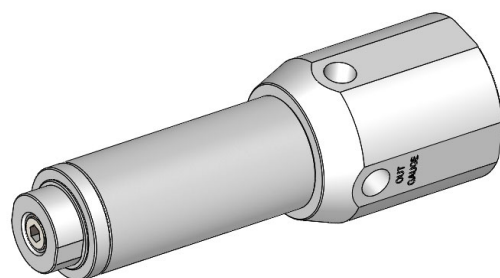


Operation and Maintenance Manual

High Pressure regulator for sealing material

HSR1



Specification	
Max. primary fluid pressure	25 MPa
Fluid flow pressure Adjusting range (Secondary fluid pressure)	10~25 MPa
Max. flow rate	0.5 L/min (2 Pa · s)
Operating temperature	0~40°C
Fluid inlet diameter	Rc 3/8 (PT 3/8)
Fluid outlet diameter	Rc 3/8 (PT 3/8)
Size	Φ64 × H193 mm
Material touching with fluid	stainless rubber, ceramic, polyethylene

This manual contains important information on warnings and cautions. Read the manual thoroughly before starting to operate the equipment, and follow the instructions.

Always keep the manual handy until such time as the equipment is no longer being used.

If your manual is lost or worn badly, do not hesitate to contact our agency which is closest to you, or the Asahi Sunac Corporation, directly, and ask us to send you a new one.



Thank you for buying our product, High Pressure Regulator HSR1.

Before use the equipment, carefully read this manual. Especially, fully understand the precautions.

Use the equipment safely and properly, follow the instructions in the manual.

If you have any questions about the manual, please get in touch with us at the addresses, phone and fax numbers as shown on the back of this manual.

General Operational Precautions

(1) Wash inside of this equipment by thinner which matches applied paint and try the whole operation actually.

(2) Do not install the regulator in a place where thinner splashes.

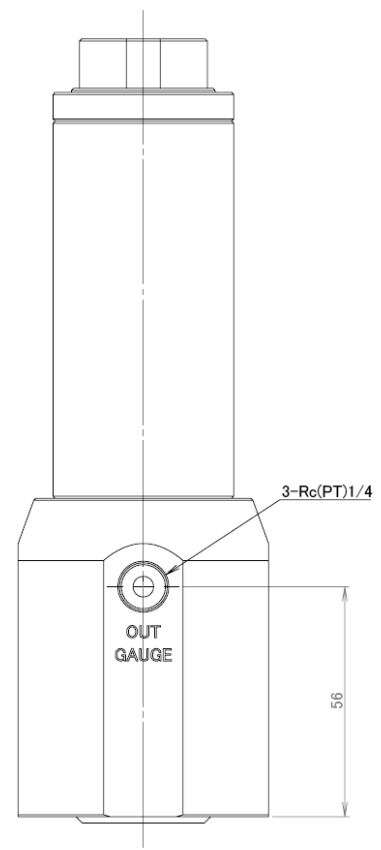
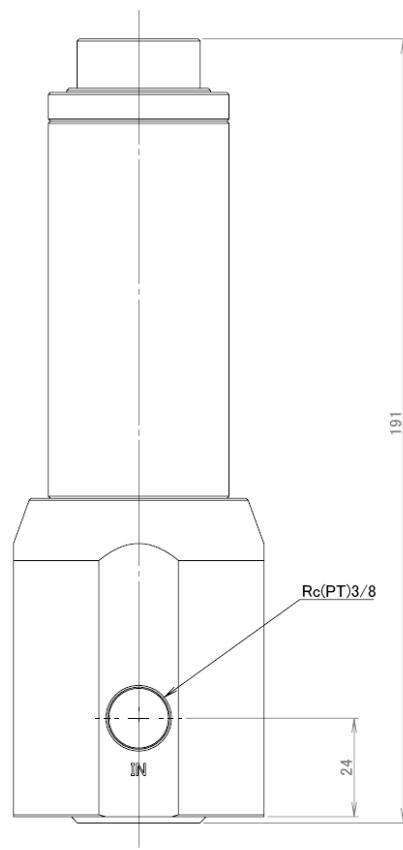
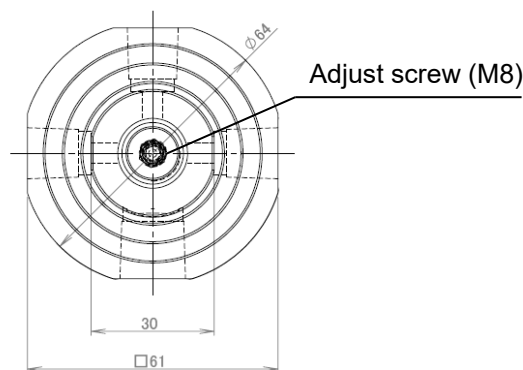
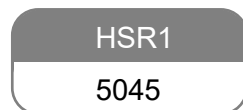
(3) Do not put primary pressure more than 25MPa.

(4) Clean well after each use.

Inadequate cleaning may cause failures such as seat failure or uncontrollable pressure.

(5) This equipment can control and keep the certain pressure by adjusting the adjust screw on top of the equipment. Do not use this equipment as on/off valve.

Outline Drawing



Pressure release procedure



WARNING

Risk of spout

- Releasing the fluid pressure by hand is necessary in order not to start up or spray in wrong.
- This is a high-pressure may cause serious personal injury.
High-pressure ruptured component pieces from point-blank range can inject fluid or Fragments into your body, causing skin injury from which no small amount of toxic Substances might enter into the body.
Should that happen, get a proper medical treatment by a specialist, immediately.
If you do not, you may suffer from a life-long disability or you may get amputated.
Fluid splashed in the eyes or on the skin can also cause serious injury.

1. Turn the safety lock of the spray gun trigger.
2. Turn off the supply system delivery.
3. Unlock the safety lock of the spray gun trigger.
4. Touch the spray gun with side of metal container, and pull the trigger in order to release the fluid pressure.
5. Lock the safety lock of the spray gun trigger
6. Open the drain valve, and discharge the waste paint.
You need to prepare the drain valve.
7. Keep to open the drain valve until resuming the spray.
If spray nozzle tip or hose is clogged or the fluid pressure does not release after executing the procedure as noted above, loosen the retaining nut or hose fitting slowly and decrease the fluid pressure gradually and remove it. Then clean the Nozzle tip and hoses.

Adjusting the pressure of the HRS1

Role of the regulator is control the secondary fluid pressure. Before adjusting the pressure, turn the cap screw counter-clockwise until the pressure eliminate. Then turn the cap screw clockwise and increase the fluid pressure.



CAUTION

- When using the pressure gauge and decrease the pressure, open the drain valve and release the pressure. Then adjust the optimal combination between primary pressure of the pump and the fluid pressure of the regulator.
- When use the circulation system, adjust the back pressure valve as well.
Record the all date for your nest execution.
- Do not put the pressure without the cap screw of the regulator. Do not remove the cap screw when the fluid passage has the pressure.

Troubleshooting

Symptom	Cause	Remedy
Cannot increase fluid pressure	Clogged fluid passage	Take it apart and clean
Fluid pressure fluctuates	Pump pressure too low	Set pressure higher

-
- When the transfer of title takes place with regard to the equipment, please make sure that this manual is handed over to the new owner of the equipment.
 - This equipment is built in accordance with the Japanese safety regulations. When it is to be used outside Japan, modifications may be necessary to be in compliance with the safety regulations of the country in which it will be used.
-

4th Edition: July 13, 2022



Leading Manufacturer of Coating FA Systems
ASAHI SUNAC CORPORATION
Head office & Factory: 5050 Asahimae-cho, Owariasahi, Aichi 488-8688 Japan

TEL 81-561-52-0717 FAX 81-561-54-8847
e-mail: ctrd01@sunac.co.jp

4th Edition: July 13, 2022