

# Operation and Maintenance Manual

## Manual Airless Spray Gun

# MG-III Series



MG-III series specifications	
Structure	Needle type
Paint pressure	0 to 25 MPa
Weight	670 g



This manual contains important information on warnings and cautions. Read the manual thoroughly before starting to operate this equipment, and follow the instructions. Always keep the manual handy until such time as the equipment is no longer being used. If your manual is lost or worn badly, do not hesitate to contact our agency which is closest to you, or the Asahi Sunac Corporation, directly, and ask us to send you a new one.

Thank you very much for choosing our product.

Thoroughly read this manual before using the equipment.

Especially, warnings and precautionary instructions shall be fully understood to ensure the correct use.

If you have any doubt about contents of the manual, please contact our office shown on the back cover.

## For Safe and Correct Use

### **WARNING**

**To prevent hazards associated with static electricity, ground all the pumps, painting objects, painting equipment and components that are used in the area. Otherwise, static electricity will be generated by the paint flow in the coating equipment to cause sparks, possibly resulting in electric shock and/or fire.**

**The misuse, e.g. an excessive pressure, alterations to the parts or the use of an inadequate paint or solvent may lead to serious injury.**

- Use this gun at a paint pressure not exceeding 25MPa.
- When removing, repairing, inspecting or taking care of the nozzle or hose, always reduce the pressure with the following pressure releasing procedure.

<<Pressure releasing procedure>>

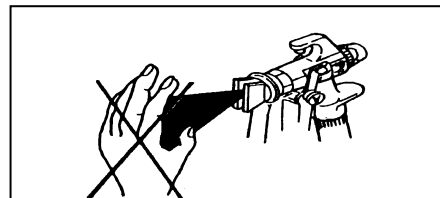
- ① Lock the trigger.
- ② Shut off the air supply (or power supply or engine) to the coating equipment to stop the pump.
- ③ Unlock the trigger and pull the trigger to reduce the paint pressure.
- ④ Open the drain valve, reduce the pressure throughout the system to zero and pull the trigger again.
- ⑤ Lock the trigger again.

- When spraying the paint, always wear a mask not to inhale poisonous gases such as vapor of an organic solvent and wear protective glasses to protect your eyes from such gases.

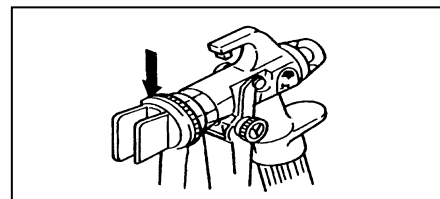
**If the paint injected under pressure from the spray gun hits the human body or skin, it may lead to serious injury.**

- Never attempt to change or modify component parts on the gun.
- Do not remove safety guard (Tip guard, Hand guard) during use.

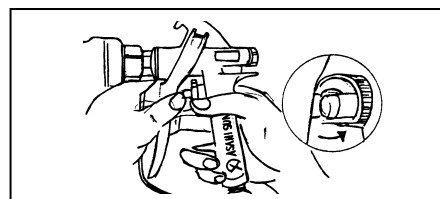
- Never direct the tip of the spray gun toward your body or another person. Do not steady the nozzle using an object held by your fingers, palm or hand.



- Do not remove the tip guard during use.  
The equipment is delivered with the tip guard installed on the retaining nut.  
After installing the nozzle, firmly tighten the retaining nut with a dedicated wrench.



- When suspending the paint spray or removing the nozzle from the gun, never fail to apply the trigger safety lock to fix the trigger.  
Failure to do this may cause the trigger to be accidentally pulled.



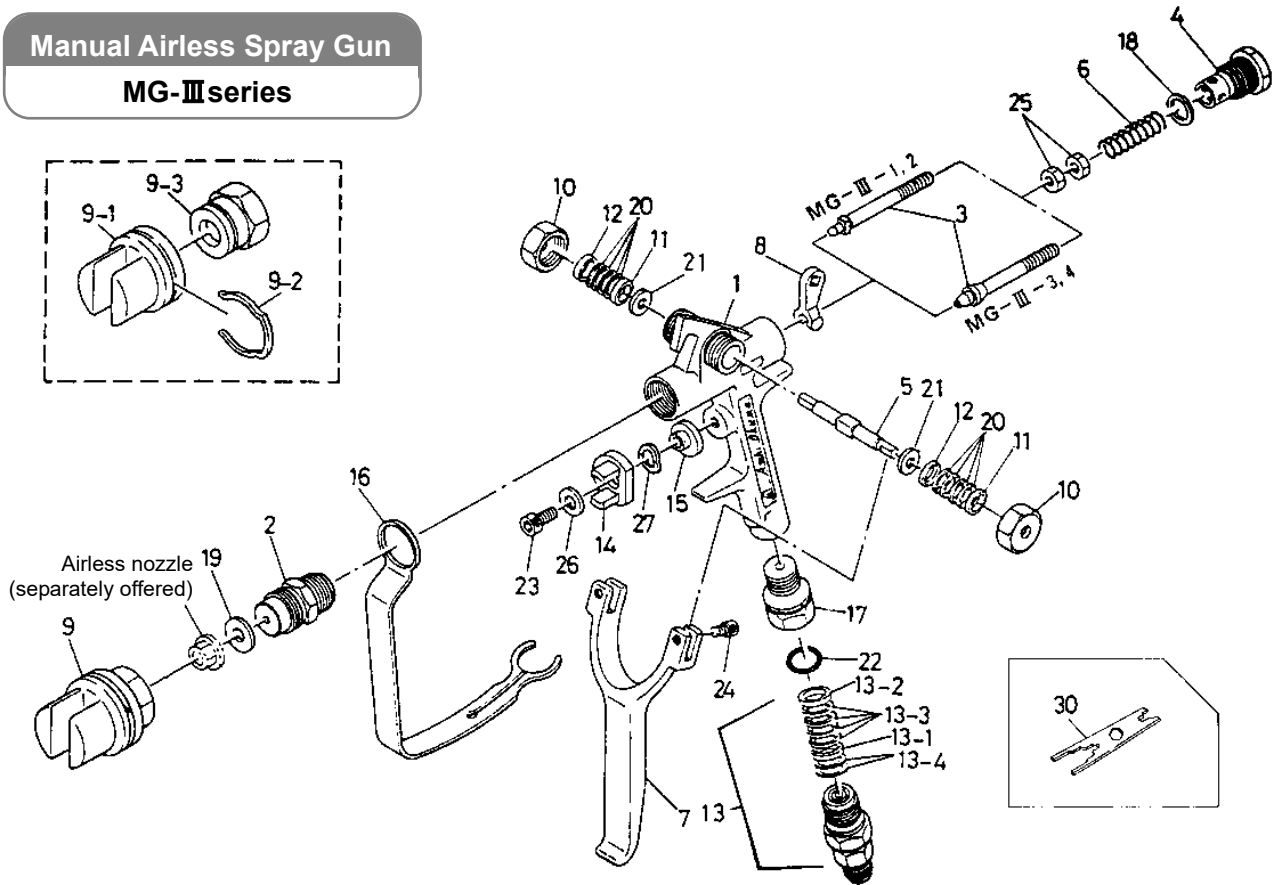
<<Necessity of medical treatment>>

**If you are hit by the paint spray under high pressure, do not get home treatment but immediately see an orthopedist or medical specialist. You need to notify him or her of the exact type of the paint used.**

# Exploded Diagram and Names of Parts

## Manual Airless Spray Gun

### MG-III series



### MG-III-1 <1268> / MG-III-2 <1269> / MG-III-3 <1270> / MG-III-4 <1271>

No.	Part Name	Qty	Part Nos. by model Stainless steel types shown in <input type="checkbox"/>			
			MG-III-1	MG-III-2	MG-III-3	MG-III-4
1	Body	1	1268-001	1268-101	1268-001	1268-101
◆2	Seat	1	1267-003		1386-003	
◆3	Needle	1	1268-003		1270-003	
4	Spring retainer	1	1207-107	1217-107	1207-107	1217-107
5	Crankshaft	1	1235-009	1217-109	1235-009	1217-109
6	Spring	1	1217-106			
7	Trigger	1	1268-007			
8	Arm	1	1268-008			
9	Retaining nut with guard	1set	1257-019			
9-1	Tip guard	1set	1294-017			
9-2	Clip	1	1294-023			
9-3	Retaining nut	1	1217-102			
10	Cap nut	2	1207-110	1207-110	1207-110	1217-110
11	Packing washer	2	2901-005	2911-005	2901-005	2911-005
12	Packing washer	2	2901-006	2911-006	2901-006	2911-006
13	Universal joint	1set	2930	2931	2930	2931
13-1	Packing washer	1	2901-006	2911-006	2901-006	2911-006
13-2	Packing washer	1	2901-005	2911-005	2901-005	2911-005
13-3	V-packing	4	V850530115			

No.	Part Name	Qty	Part Nos. by model Stainless steel types shown in <input type="checkbox"/>			
			MG-III-1	MG-III-2	MG-III-3	MG-III-4
13-4	Spacer	2	2920-009			
14	Stopper	1	1201-011			
15	Bushing	1	1201-012			
16	Hand guard	1	1268-016			
17	Socket	1	1268-017			
18	Gasket	1	146-0002			
19	Gasket	1	146-3002			
20	V-packing	8	V850530115			
21	Spacer	2	2920-009			
22	O-ring	1	103-6009			
23	Hex. socket bolt	1	03-50512			
24	Hex. socket bolt	2	03-50310			
25	Hex. nut	2	15-10500	15-70500	15-10500	15-70500
26	Plain washer	1	36-10500			
27	Wave washer	1	47-60800			
Optional items						
28	Gun filter	1	1404			
29	Filter housing	1	1423-001			

Items marked with ◆: The replacement of seat (2) and needle (3) simultaneously is recommended because both of these are consumable parts.

#### ■ Accessory tool

No.	Part No.	Part Name	Qty	Remarks
30	3511-201	Dedicated wrench	1	

**Note:** The configurations and specifications of the equipment are subject to change without prior notice due to continuous improvements which we incorporate into equipment as they are made.

## How to Use

1. Check the gun clip (2) for loose connection. After tightening by hand, firmly tighten with a wrench.
2. Correctly connect the paint hose to the spray gun and set the paint pressure in the coating equipment between 2 and 3MPa.
3. First, spray the paint into an empty can or such with no nozzle installed.
4. Select a nozzle suitable to the conditions of use and install it to the gun tip.
5. Perform a spray test while observing atomization results. Adjust the coating equipment to the lowest necessary pressure.

### CAUTION

- When mixing the paint, thoroughly read instructions for the paint and solvent.
- Keep the nozzle and its vicinity clean. At the completion of work, remove and wash the nozzle. Never fail to lock the trigger at this time.
- Never immerse the gun wholly in paint thinner. Doing so removes the lubricant, resulting in damage to the packing.
- For the paint hose, use a metal braid shielded or grounded hose.

## Troubleshooting

Symptom	Cause	Remedy
No spray	- The paint is not fed.	- Check the coating equipment.
	- Clogged nozzle	- Remove clogging matter using nozzle cleaner or such.
Weak spray	- Clogged filter (28)	- Clean or replace the filter.
Paint leak	- Loose cap nut (10)	- Tighten.
	- Worn V-packing (20)	- Replace the V-packing.
	- Worn crankshaft (5)	- Replace the crankshaft.
	- Leak from universal joint (13)	- Replace the universal joint.
Faulty spray ( drags on or does not stop )	- Sticking needle (3) or crankshaft (5)	- Overhaul and wash. Replace the V-packing.
	- Foreign matter entangled between needle (3) and seat (2)	- Overhaul and wash.
	- Wear or damage of contact surfaces of needle (3) and seat (2)	- Replace the needle and seat.

- When handing the equipment over to the next user, always attach this manual to the equipment.
- When using the equipment in a country out of Japan, it is necessary to observe the safety standards in effect in that country.

17th Edition: June 24, 2022

## ASAHI SUNAC CORPORATION

HEAD OFFICE  
5050, SHINDENBORA, ASAHIMAE-CHO,  
OWARIASAHI, AICHI PREF. 488-0852, JAPAN  
PHONE +81-561-52-0717 FAX +81-561-54-8847

URL : [www.sunac.co.jp](http://www.sunac.co.jp)  
E-mail : [ctrd01@sunac.co.jp](mailto:ctrd01@sunac.co.jp)

Sales office



English



Chinese

17th Edition: June 24, 2022