

Operation and Maintenance Manual

Manual Airless Spray Gun



MG- I Series

MG- I series specification	
Structure	Needle type
Paint pressure	0 to 20 MPa
Weight	Aluminum type: 490g
	Hand pipe (optional): 90g

This manual contains important information on warnings and cautions. Read the manual thoroughly before starting to operate this equipment, and follow the instructions.

The pump main body should be always grounded.

Always keep the manual handy until such time as the equipment is no longer being used.

If your manual is lost or worn badly, do not hesitate to contact our agency which is closest to you, or the Asahi Sunac Corporation, directly, and ask us to send you a new one.



Thank you very much for choosing our product.

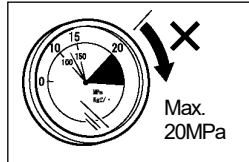
Thoroughly read this manual before using the equipment.

Especially, warnings and precautionary instructions shall be fully understood to ensure the correct use.

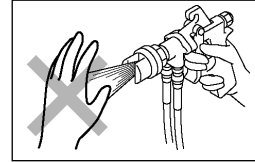
WARNING

If the paint injected under high pressure from the spray gun hits the human body or skin, it may lead to serious injury.

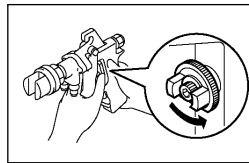
- ① Use this gun at a paint pressure not exceeding 20MPa.



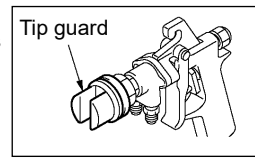
- ② Never direct the tip of the spray gun toward your body or another person. Do not steady the nozzle using an object held by your fingers, palm or hand.



- ③ When suspending the paint spray or removing the nozzle from the gun, never fail to lock the trigger.



- ④ Do not remove the tip guard during use. The equipment is delivered with the tip guard installed on the retaining nut. After installing the nozzle, firmly tighten the retaining nut with a dedicated wrench.



* The tip guard protects your skin from the paint under high pressure.

If you are hit by the paint spray under high pressure, do not get home treatment but immediately see a medical specialist. You need to notify him or her of the exact type of the paint used.

- ① Do not remove or overhaul the hose without reducing the pressure.
- ② When spraying the paint, always wear a mask not to inhale poisonous gases such as vapor of an organic solvent and wear protective glasses to protect your eyes from such gases.
- ③ To prevent hazards associated with static electricity, ground all the pumps, painting objects, painting equipment and components that are used in the area. Otherwise, static electricity will be generated by the paint flow in the coating equipment to cause sparks, possibly resulting in electric shock and/or fire.

<<Pressure reduction procedure>>

- ① Lock the trigger.
- ② Shut off the air supply (or power supply or engine) to the coating equipment to stop the pump.
- ③ Unlock the trigger and pull the trigger to reduce the paint pressure.
- ④ Open the drain valve, reduce the pressure throughout the system to zero and pull the trigger again.
- ⑤ Lock the trigger again.

Conditions of Use

- ① Correctly connect the paint hose to the spray gun and set the paint pressure in the coating equipment between 2 and 3MPa.
- ② First, spray the paint into an empty can or such with no nozzle installed.
- ③ Select a nozzle suitable to the conditions of use and install it to the gun tip. Do not forget to install the gasket.
- ④ Perform a spray test while observing atomization results. Adjust the coating equipment to the lowest necessary pressure. Use between 10 and 15MPa.

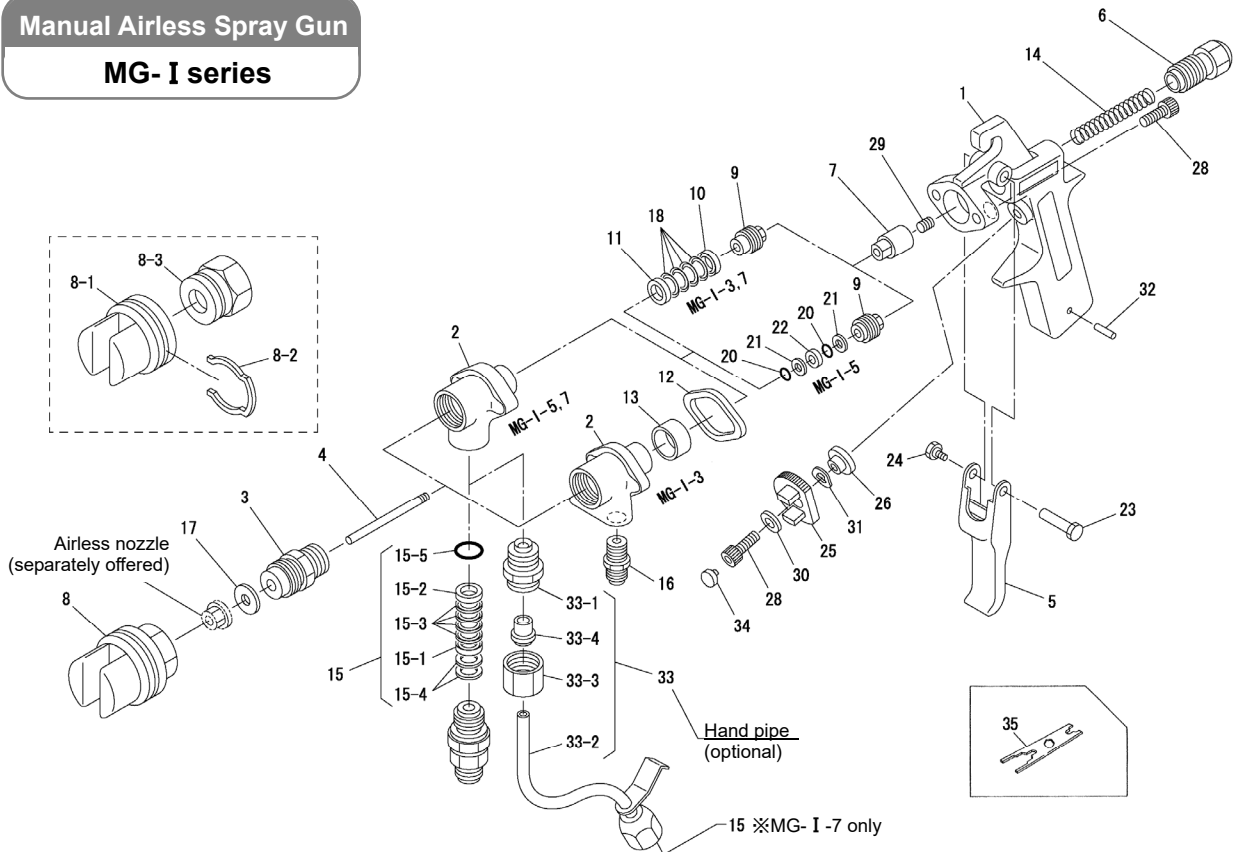
CAUTION

- When mixing the paint, thoroughly read instructions for the paint and solvent.
- Keep the nozzle and its vicinity clean. At the completion of work, remove and wash the nozzle. Never fail to lock the trigger at this time.
- Never immerse the gun wholly in paint thinner. Doing so removes the lubricant, resulting in damage to the packing.
- For the paint hose, use a metal braid shielded or grounded hose.

Exploded Diagram and Names of Parts

Manual Airless Spray Gun

MG- I series



MG- I -3<1263>/ MG- I -5<1265>/ MG- I -7<1281>

No.	Part Name	Qty	MG- I -3	MG- I -5	MG- I -7	No.	Part Name	Qty	MG- I -3	MG- I -5	MG- I -7
1	Body	1		1261-001		16	Hose nipple	2	247-2102	-	-
2	Gun head	1	1261-202	1261-402	1261-002	※17	Gasket	1		146-3002	
※◆3	Seat	1	1267-003	1385-003	1267-003	※18	V-packing	4	V850320105	-	V850320105
※◆4	Needle	1	1261-004	1385-004	1261-004	19	Nil				
5	Trigger	1		1261-005		※20	O-ring	2	-	101-6003	-
6	Spring adjuster	1		1261-006		※21	Back-up ring	2	-	106-2003	-
7	Slide	1		1261-007		22	Spacer	1	-	1385-010	-
8	Retaining nut with guard	1 set		1257-019		23	Trigger pin	1		1261-119	
8-1	Tip guard	1 set		1294-017		24	Trigger bolt	1		1261-020	
8-2	Clip	1		1294-023		25	Stopper	1		1201-011	
8-3	Retaining nut	1		1217-102		26	Bushing	1		1201-012	
9	Packing adjuster	1	1381-009	1385-009	1381-009	※27	Nil				
10	Packing washer	1	1203-124	-	1203-124	28	Hex. socket bolt	3		03-50515	
11	Packing washer	1	1203-125	-	1203-125	29	Hex. socket set screw	1		86-50506	
12	Insulation	1	1261-012	-	-	30	Plain washer	1		36-10500	
13	Bushing	1	146-3001	-	-	31	Wave washer	1		47-60800	
14	Spring	1		1261-014		32	Spring pin	1		54-70316	
※15	Universal joint	1 set	-	2930		Optional items					
15-1	Support ring	1	-	2901-006		33	Hand pipe	1 set	-	-	1486
15-2	Support ring	1	-	2901-005		33-1	Nipple	1	-	-	1486-001
※15-3	V-packing	4	-	V850530115		33-2	Pipe assembly	1	-	-	1486-002
※15-4	Spacer	2	-	2920-009		33-3	Nut	1	-	-	1486-103
※15-5	O-ring	1	-	103-6009		33-4	Sleeve	1	-	-	1486-104
						34	Cap	3	-	1279-040	-

Items marked with ※ are the parts we recommend you to carry in stock. Example of ordering: 10 V-packings, V850320105

Items marked with ◆ The replacement of seat (3) and needle (4) simultaneously is recommended because both of these are consumable parts.

■Accessory tool

No.	Part No.	Part Name	Qty	Remarks
35	3511-201	Wrench	1	

Note: The configurations and specifications of the equipment are subject to change without prior notice due to continuous improvements which we incorporate into equipment as they are made.

Troubleshooting

※ Numbers within parentheses correspond to the ones in the exploded view.

Symptom	Cause	Remedy
No spray	- The paint is not fed.	- Check the coating equipment.
	- Clogged nozzle	- Remove clogging matter using nozzle cleaner or such.
Paint leak	- Loose packing adjuster (9)	- Tighten. ※1
	- Worn V-packing (18, 15-3)	- Replace consumables.
	- Worn needle (4)	- Replace the needle
Faulty spray (drags on or does not stop)	- Too tight packing adjuster (9)	- Slightly loosen. ※2
	- Sticking needle (4) due to paint leak	- Overhaul and wash. Replace the packing.
	- Foreign matter entangled between needle (4) and seat (3)	- Overhaul and wash.
	- Wear or damage of contact surfaces of needle (4) and seat (3)	- Replace the needle and seat.

※1: The MG- I -5 (for zinc-rich paint) use O-ring packings, which cannot be tightened.

※2: Keep the packing adjuster (9) tightened and, if leak occurs, replace the O-ring.

List of MG- I Series models (stainless steel types shown in □)

Item Model	Classification	Feature	Applications
MG- I -3	Hot (circulating) type	Standard	Ordinary paint Oil-based, zinc-rich paint Multi-component paint Separate paint Color changes
MG- I -5	Exclusive gun for zinc-rich paint	Zinc-rich	Water-soluble, zinc-rich paint (solvent based paint cannot be used)
MG- I -7	With Hand pipe	Option	Plural component material paint

※ The MG- I series products are airless hand guns with the simplest construction.

※ Three variants are offered, taking advantage of the easy-to-wash paint circuit.

- When handing the equipment over to the next user, always attach this manual to the equipment.
- When using the equipment in a country out of Japan, it is necessary to observe the safety standards in effect in that country.

16th Edition: June 30, 2022

ASAHI SUNAC CORPORATION

HEAD OFFICE
5050, SHINDENBORA, ASAHIMAE-CHO,
OWARIASAH, AICHI PREF. 488-0852, JAPAN
PHONE +81-561-52-0717 FAX +81-561-54-8847

URL : www.sunac.co.jp
E-mail : ctrd01@sunac.co.jp

Sales office



English



Chinese

16th Edition: June 30, 2022