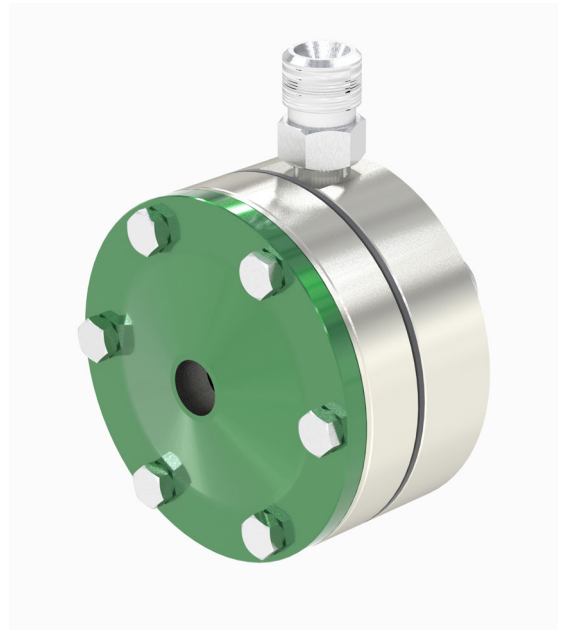


# Operation and Maintenance Manual

## Air Controlled Paint Regulator

# MR70H



Specifications	
Max. primary fluid pressure	0.7MPa
Fluid flow pressure adjusting range (Secondary fluid pressure)	0.026~0.26MPa
Max. flow rate	2L/min (17sec/FC#4) 1L/min (40sec/FC#4)
Operation temperature	0~40°C
Fluid inlet diameter	G1/4 (PF1/4)
Fluid outlet diameter	G1/4 (PF1/4)
Port dia. for operation air	Rc1/8 (PT1/8)



This manual contains important information on warnings and cautions. Read the manual thoroughly before starting to operate the equipment, and follow the instructions.

Always keep the manual handy until such time as the equipment is no longer being used.

If your manual is lost or worn badly, do not hesitate to contact our agency which is closest to you, or the Asahi Sunac Corporation, directly, and ask us to send you a new one.

Thank you for buying our product.

Before you use the equipment, carefully read this manual. Especially, fully understand the precautions.

Use the equipment safely and properly, following the instructions in the manual.

Should you have any questions about the manual, please get in touch with us at the addresses, phone and fax numbers as shown on the back of this manual.

## General Operational Precautions

- (1) Wash inside this equipment by a thinner which matches used paint and try the whole operation actually.
- (2) Do not install the regulator in a place where thinner splashes.
- (3) Please do not the equipment to the solvent when you the resolution washing.
- (4) Clean well after each use.

Inadequate cleaning may cause failures such as this equipment seat failure or uncontrollable pressure.



### WARNING

**The maximum primary fluid pressure is 0.7MPa.  
Therefore, do not connect this equipment with a pump  
which can generate a pressure of 0.7MPa or more.**



## **CAUTION**

**This equipment is designed and built to maintain constant fluid pressure by controlling it with control air pressure. When you control ON-OFF of paint fluid delivery , please prepare our product “Color Change Valve (CCV series )”.**



## **CAUTION**

**Using the paint containing a large particular or a pigment that has large specific gravity may cause paint deposition in paint route because this equipment is designed to operate with general paints.**

# The function and installation

This equipment is for stabilizing the pressure for Paint out side. Adjusted to about half the pressure air.

The paint feeder connects to Paint IN side.

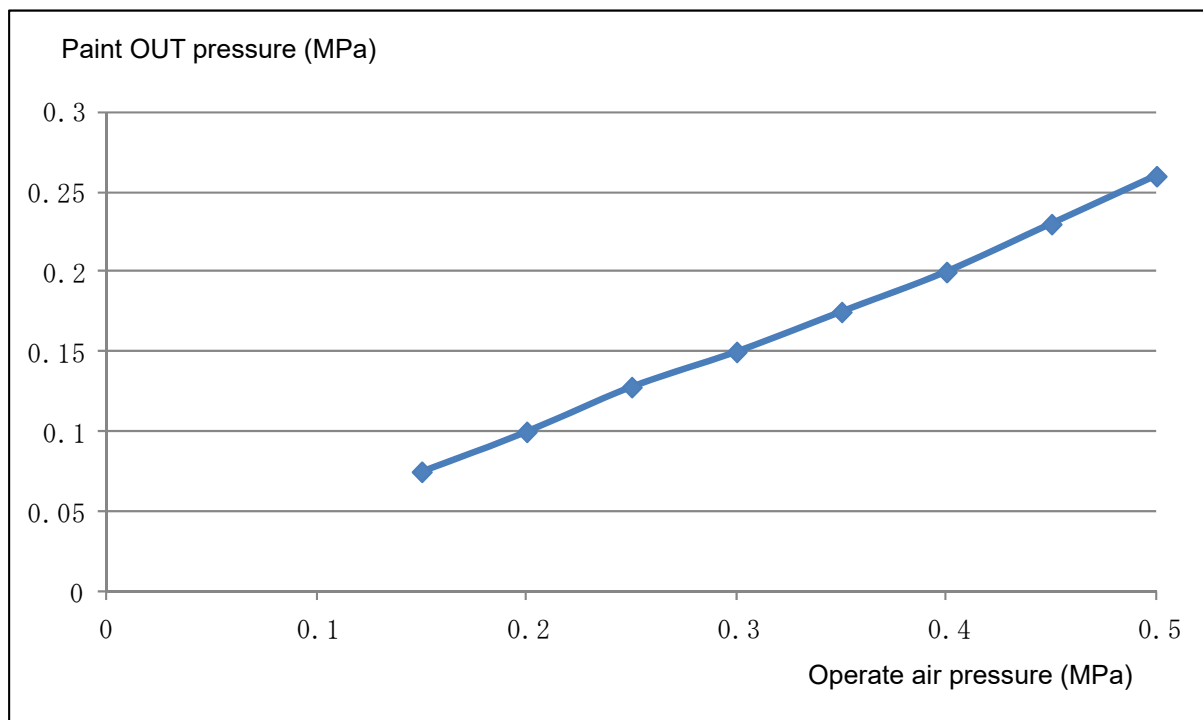
The adjustable air supply connects to Operate air IN.

The spray gun attached to the paint hose connects to Paint OUT side.

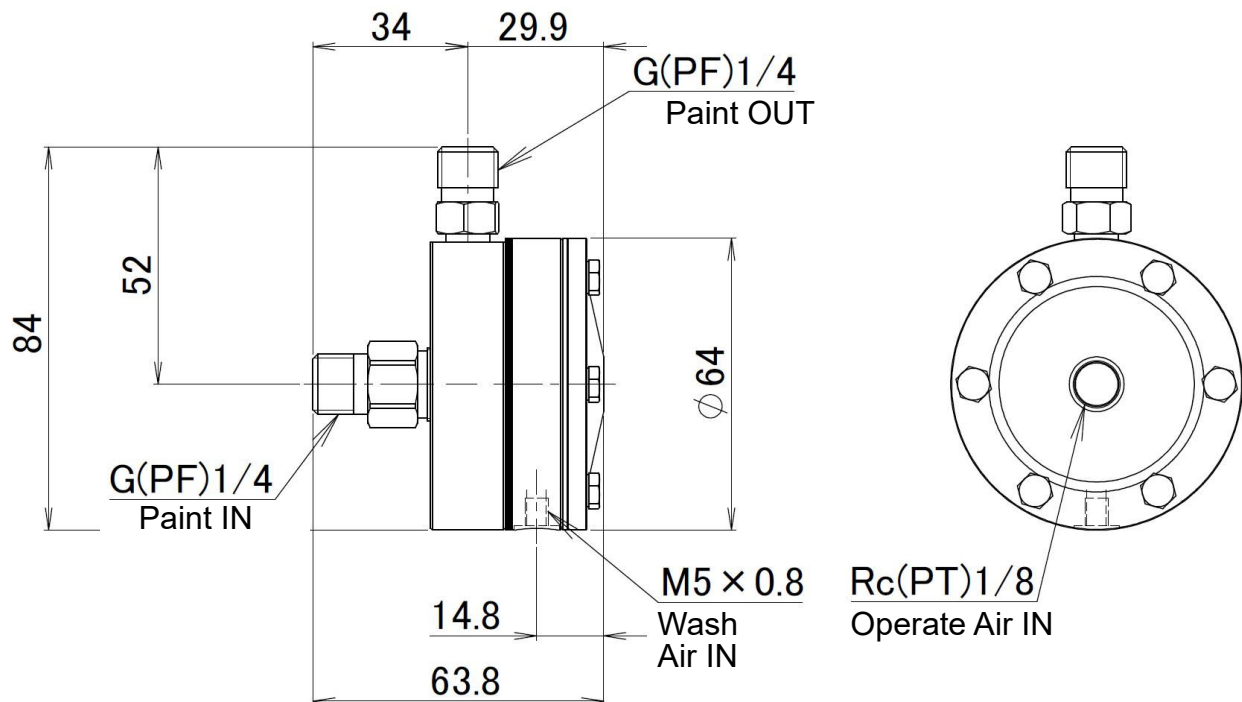
## Operation

Raise the pressure of the paint feeder to specified value and after that, raise the pressure of the operate air. Pressure-adjustable air source is connect to the Wash air IN to raise the pressure to the specified pressure when washing. In that case, the paint pressure is almost the same as the Wash air pressure.

## Paint OUT pressure - Operate air pressure



# Outline Drawing



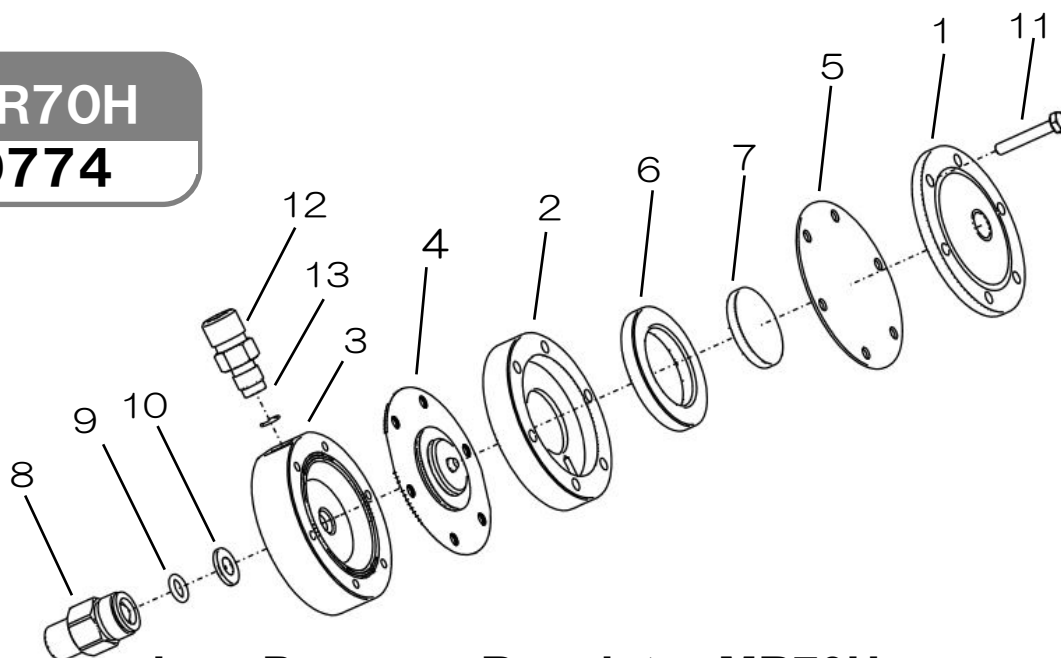
Wash air is used during cleaning, and the air pressure and paint pressure are almost the same.

# Troubleshooting

Trouble	Cause	Solution
Cannot increase fluid pressure	Clogged fluid passage	Take it apart and clean.
Cannot reduce fluid pressure	① Foreign materials on valve seat (8)	① Take valve (8) apart and clean
	② Worn valve (8)	② Replace valve (8)
Fluid pressure fluctuates	Pump pressure too low	Set pressure higher (0.3~0.4MPa)

# Names of Parts

**MR70H**  
**0774**



**Low Pressure Regulator MR70H**

No.	Part No.	Name	Qty	Remarks
1	0774-001	Cap	1	
2	0775-002	Body A	1	
3	0775-003	Body B	1	
※4	0775-004	Diaphragm A	1	
※5	0775-005	Diaphragm B	1	
6	0775-006	Spacer A	1	
7	0774-007	Pusher	1	
※8	0767-005	Valve	1	
※9	101-9007	O-ring	1	
10	0767-007	Gasket	1	
11	01-70425	Hex. bolt	6	
12	0775-013	Nipple	1	
13	129-9006	O-ring	1	

- Items marked with ※ are those items that we recommend you carry in your stock.

# Warranty

ASAHI SUNAC CORPORATION (the “Company”) shall provide the original purchaser (the “Purchaser”) with warranty service for a period of 6 months from the date of purchase of the product, as follows:

- Should you find defects in design or workmanship with regard to parts, ship them back to the Company, with freight prepaid. The Company shall repair or replace the parts free of charge and reimburse the freight charges, provided that, as a result of an inspection and investigation of the parts conducted by the Company, the defects are deemed to be attributable to the factors within the Company’s responsibility.
- In the following cases, free after-sales service is not provided.
  1. Failure resulting from an inappropriate method of installing this equipment.
  2. Failure resulting from a use method not conforming to this instruction manual or mishandling.
  3. Failure resulting from insufficient maintenance management of this equipment and incorrect handling such as non-conformance to the procedures specified in this instruction manual.
  4. Failure resulting from unauthorized alteration or structure change of this equipment without the Company’s consent.
  5. Failure due to force majeure such as earthquake, disaster, flood disaster or lightning.
  6. Warranty for consumables worn or deteriorated even in the case where this equipment is used correctly.
  7. Repair after the machine has been used outside Japan, and shipping cost.
  8. In addition to the above, failure due to circumstances beyond our control.
- As for items such as parts purchased by the Company from another manufacturer, the warranty of that manufacturer shall apply.
- As for any parts deemed to be defective, the Company shall not be held liable for any expenses beyond the provision of repair or replacement parts free of charge.
- The Company shall not be held liable for any damage to the Purchaser caused by factors not attributable to the Company, such as misuse of product, etc.

- 
- When the transfer of title takes place with regard to the equipment, please make sure that this manual is handed over to the new owner of the equipment.
  - This equipment is built in accordance with the Japanese safety regulations. When it is to be used outside Japan, modifications may be necessary to be in compliance with the safety regulations of the country in which it will be used.
- 

5th Edition: July 5, 2022



Leading Manufacturer of Coating FA Systems  
ASAHI SUNAC CORPORATION  
Head office & Factory: 5050 Asahimae-cho, Owariasahi,  
Aichi 488-8688 Japan  
TEL81-561-52-0717 FAX 81-561-54-8847 E-mail: ctrd01@sunac.co.jp