

Operation and Maintenance Manual

Air Controlled Paint Regulator

MR70P



Specifications	
Max. primary fluid pressure	0.5MPa
Fluid flow pressure adjusting range (Secondary fluid pressure)	0.05~0.3MPa
Max. flow rate	4.5L/min (40sec/FC#4)
Operation temperature	0~40°C
Fluid inlet diameter	M20 P=1.5 Joint mounting side Rc3/8 (PT3/8)
Fluid outlet diameter	M20 P=1.5 Joint mounting side Rc3/8 (PT3/8)
Paint Return Connector	Plugged (Plug mounting side Rc3/8(PT3/8))
Control Air Connector	O.D. ϕ 8-I.D. ϕ 6 Joint mounting side Rc1/4 (PT1/4)



This manual contains important information on warnings and cautions. Read the manual thoroughly before starting to operate the equipment, and follow the instructions.

Always keep the manual handy until such time as the equipment is no longer being used.

If your manual is lost or worn badly, do not hesitate to contact our agency which is closest to you, or the Asahi Sunac Corporation, directly, and ask us to send you a new one.

Thank you for buying our product.

Before you use the equipment, carefully read this manual. Especially, fully understand the precautions.

Use the equipment safely and properly, following the instructions in the manual. Should you have any questions about the manual, please get in touch with us at the addresses, phone and fax numbers as shown on the back of this manual.

Features

- (1) As main body and liquid-contacting parts of this Regulator are made of solvent-resistant materials like engineering plastics, you can apply almost all types of liquids not only solvent based but also water-borne ones.
- (2) Solvent resistant flexible diaphragm is designed to be durable against long time of use. The large diameter of diaphragm made of engineering plastic material has superior mechanical strength, tough spring-back and better durability against high temperature as well as chemical influence.
- (3) Liquid flow rate can be precisely controlled remotely by means of air control.
- (4) The engineering plastic material can also have high resistance against higher electric voltage, that assure safety even when conductive liquid is used for electrostatic coating.

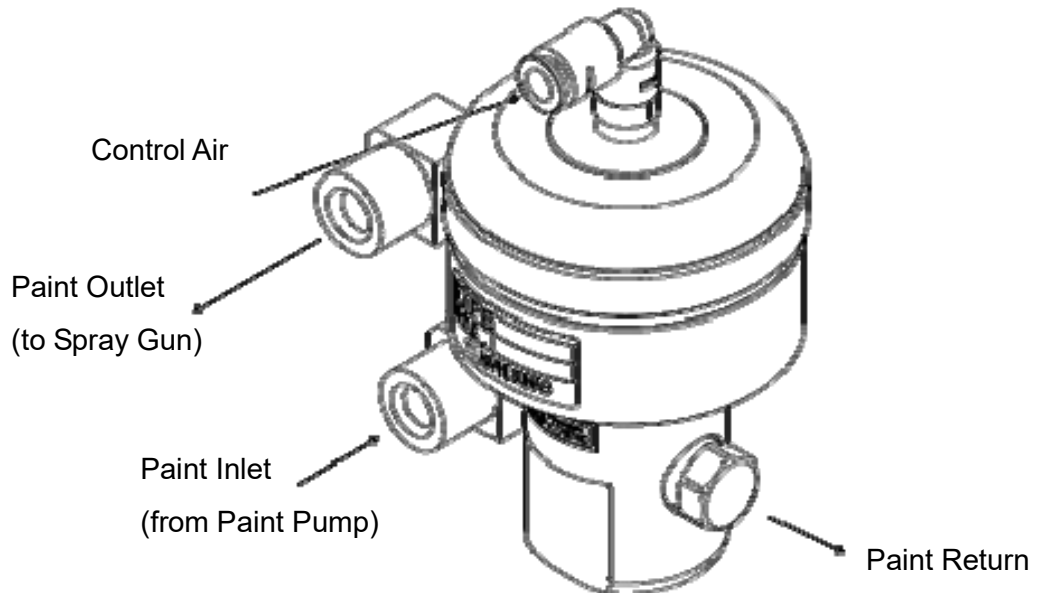
* Do not use high viscosity paint etc., please consult to us.

General Operational Precautions

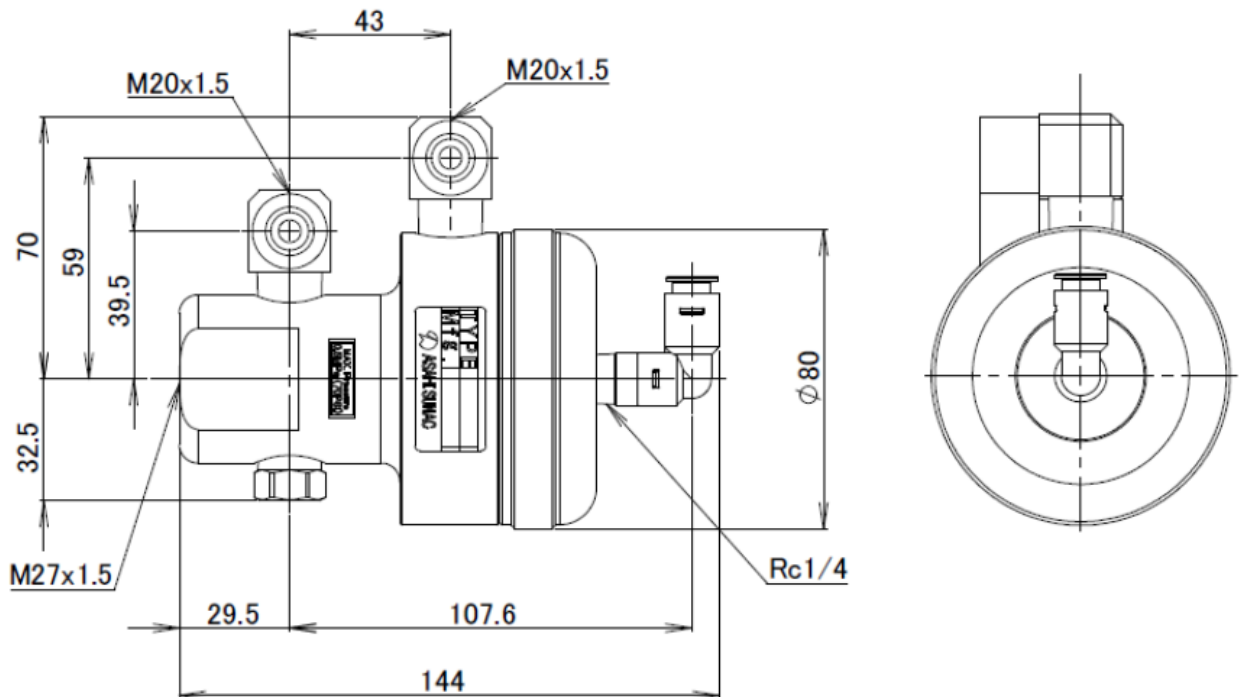
- (1) Wash inside this equipment by a thinner which matches used paint and try the whole operation actually.
- (2) Do not install the regulator in a place where thinner splashes.
- (3) Please do not touch the equipment to the solvent when you do the resolution washing.
- (4) Clean well after each use. Inadequate cleaning may cause failures such as this equipment seat failure or uncontrollable pressure.

Connection

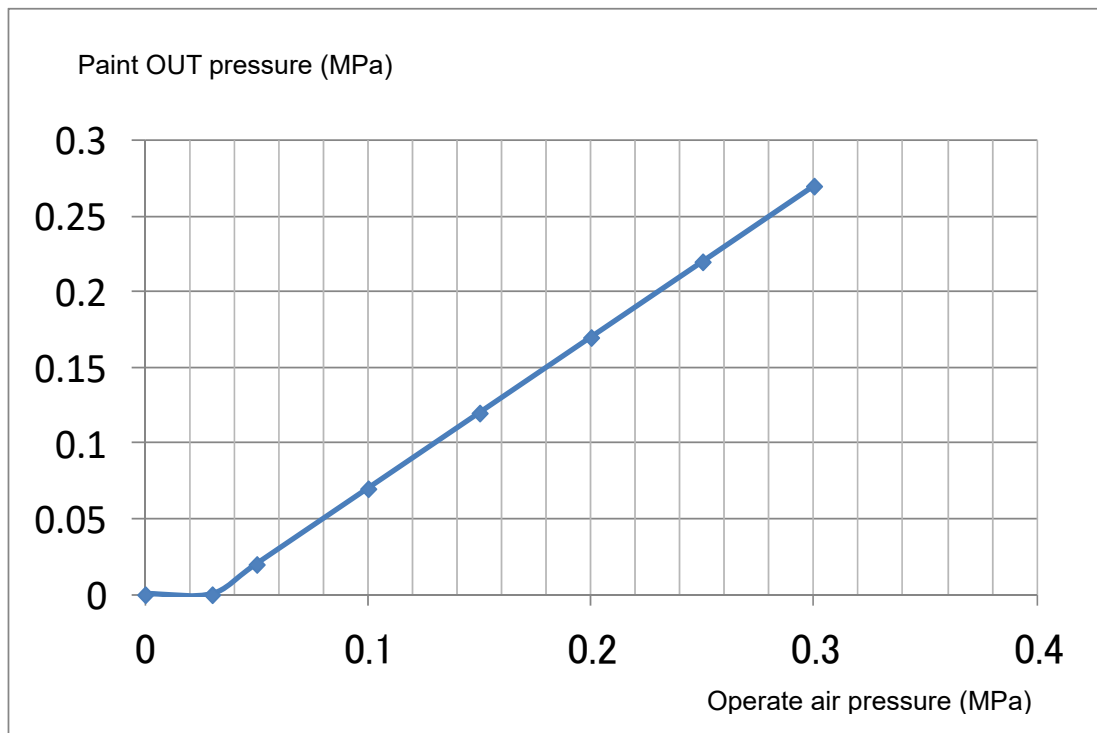
To connect paint and air hoses to this Regulator, please refer to the sketch below.



Outline Drawing



Paint OUT pressure - Operate air pressure





CAUTION

Be careful not to make operation air pressure higher than primary paint pressure.

It may cause decreasing of paint flow or loosen of durability of diaphragm.



WARNING

Permissible primary liquid pressure is 0.5MPa or under. Do not use this regulator in connection with any paint pump having possibility of getting liquid pressure over 0.5MPa.



CAUTION

This equipment is designed and built to maintain constant fluid pressure by controlling it with control air pressure. To provide a fluid-turn-ON/OFF function in the line, install a separate valve.



CAUTION

Using the paint containing a large particular or a pigment that has large specific gravity may cause paint deposition in paint route because this equipment is designed to operate with general paints.

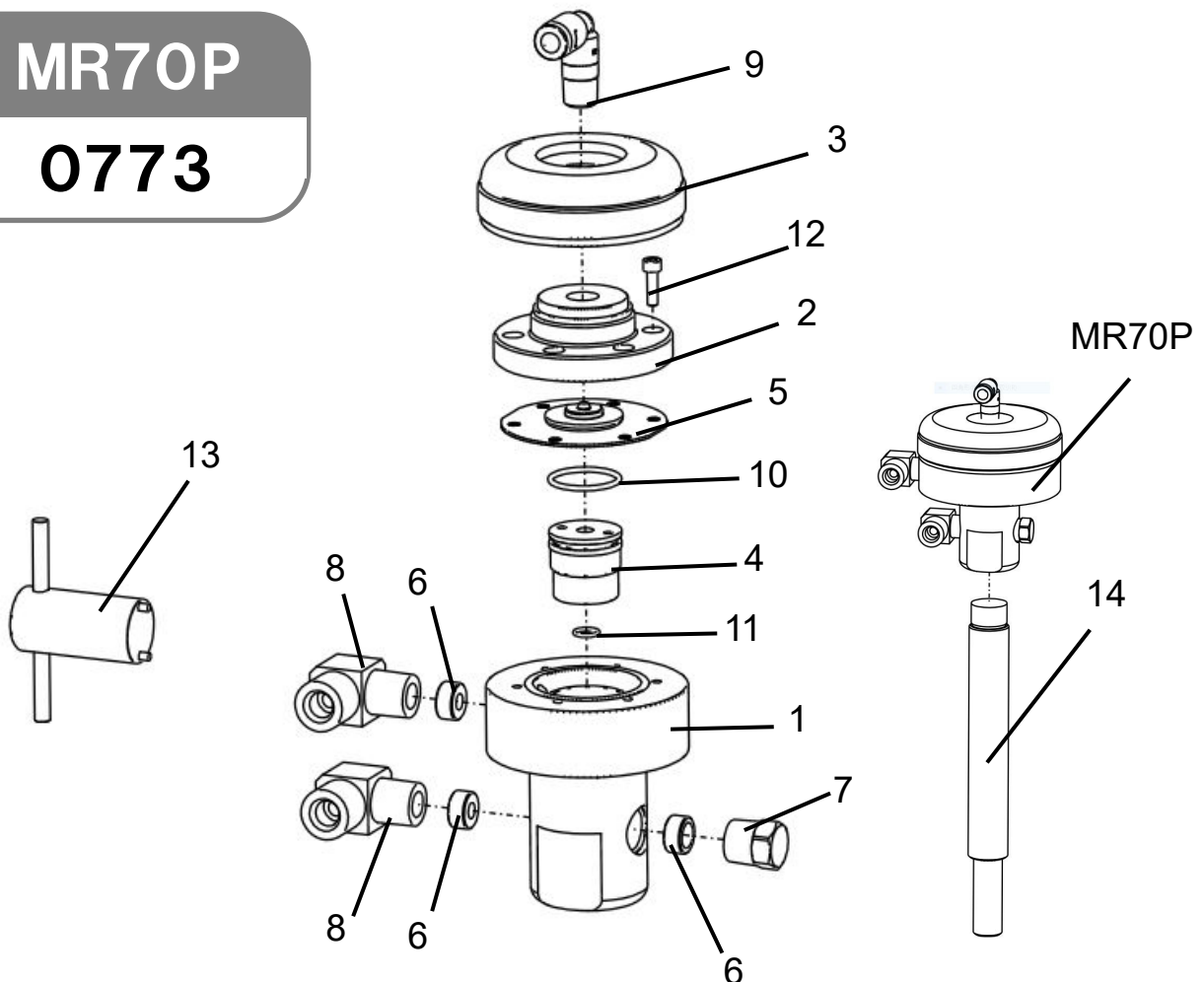
Troubleshooting

Trouble	Cause	Solution
Cannot increase fluid pressure	Clogged fluid passage	Take it apart and clean.
Cannot reduce fluid pressure	① Foreign materials on valve seat (4)	① Take valve (4) apart and clean
	② Worn valve (4)	② Replace valve (4)
Fluid pressure fluctuates	Pump pressure too low	Set pressure higher (0.15~0.7MPa)

Names of Parts

MR70P

0773





CAUTION

The tightening torque of the diaphragm is 5N·m. If the tightening torque is weak, paint may leak, and if it is strong, the diaphragm may be damaged.

No.	Part No.	Name	Qty	Remarks
1	0773-001	Body	1	
2	0773-002	Air housing	1	
3	0773-003	Cap	1	
※4	0773-004	Valve	1	
※5	0767-004	Diaphragm	1	
6	0726-138	Bush	3	
7	1364-081	Blind plug	1	
8	0726-132	L-type joint	2	
9	347-0005	L-type joint	1	
※10	130-9025	O-ring	1	
※11	130-2008	O-ring	1	
12	03-70414	Hex. bolt	6	
13	0773-023	Driver	1	
14	0727-002	Support bar	1	Option

- Items marked with ※ are those items that we recommend you carry in your stock.

Warranty

ASAHI SUNAC CORPORATION (the “Company”) shall provide the original purchaser (the “Purchaser”) with warranty service for a period of 6months from the date of purchase of the product, as follows:

- Should you find defects in design or workmanship with regard to parts, ship them back to the Company, with freight prepaid. The Company shall repair or replace the parts free of charge and reimburse the freight charges, provided that, as a result of an inspection and investigation of the parts conducted by the Company, the defects are deemed to be to attributable to the factors within the Company’s responsibility.
- In the following cases, free after-sales service is not provided.
 1. Failure resulting from an inappropriate method of installing this equipment.
 2. Failure resulting from a use method not conforming to this instruction manual or mishandling.
 3. Failure resulting from insufficient maintenance management of this equipment and incorrect handling such as non-conformance to the procedures specified in this instruction manual.
 4. Failure resulting from unauthorized alteration or structure change of this equipment without the Company’s consent.
 5. Failure due to force majeure such as earthquake, disaster, flood disaster or lightning.
 6. Warranty for consumables worn or deteriorated even in the case where this equipment is used correctly.
 7. Repair after the machine has been used outside Japan, and shipping cost.
 8. In addition to the above, failure due to circumstances beyond our control.
- As for any parts deemed to be defective, the Company shall not be held liable for any expenses beyond the provision of repair or replacement parts free of charge.
- The Company shall not be held liable for any damage to the Purchaser caused by factors not attributable to the Company, such as misuse of product, etc.

[MEMO]

-
- When the transfer of title takes place with regard to the equipment, please make sure that this manual is handed over to the new owner of the equipment.
 - This equipment is built in accordance with the Japanese safety regulations. When it is to be used outside Japan, modifications may be necessary to be in compliance with the safety regulations of the country in which it will be used.
-

7th Edition: June 30, 2022

ASAHI SUNAC CORPORATION

HEAD OFFICE
5050, SHINDENBORA, ASAHIMAE-CHO,
OWARIASAHI, AICHI PREF. 488-0852, JAPAN
PHONE +81-561-52-0717 FAX +81-561-54-8847

URL : www.sunac.co.jp
E-mail : ctrd01@sunac.co.jp

Sales office



English



Chinese