

Operation and Maintenance Manual

Compact, high-speed agitator

PMH200(S)



PMH200



This manual contains important information on warnings and cautions. Read the manual thoroughly before starting to operate the pump, and follow the instructions. Always keep the manual handy until such time as the pump is no longer being used. If your manual is lost or worn badly, do not hesitate to contact our agency which is closest to you, or the Asahi Sunac Corporation, directly, and ask us to send you a new one.

Thank you very much for buying our product.

Before you use this equipment, please carefully read the Operation and Maintenance Manual.

Please pay your extra attentions to the articles concerning safety warnings and cautions, so that you may be able to operate the equipment safely and in a way that you get the most out of it.

You must strictly follow the instructions given in the Manual: Failure to do so may result in injury to the operator or people around or damage to the equipment or objects in the spray area

Specifications

Operating air pressure	0.1 to 0.3MPa
Rotational speed	500 to 1,000rpm in water (at air supply pressure between 0.1 and 0.3MPa max.)
Air motor output	1/3HP
Air consumption (max.)	150NL/min.
Air inlet diameter	PT1/4

※ The minimum operating air pressure depends on the paint viscosity.

Operating procedure

- ① Connect an air hose to the PMH200(S) body.
- ② Open (rotate counterclockwise) the needle valve set on the air motor and run the agitator while adjusting its rotational speed.
- ③ Close (rotate clockwise) the needle valve (air supply) to stop rotation, or further open to increase the rotational speed.

Precautionary notes

- ① Do not run the agitator at a higher speed with nothing in it.
- ② Do not suddenly increase the rotational speed during operation.
※ Doing what is prohibited in ① or ② may cause damage to the air motor.
- ③ Never remove the rotating agitator from the material can or touch the rotating propellers.
- ④ Do not change or modify the propeller and shaft as it may cause a failure.

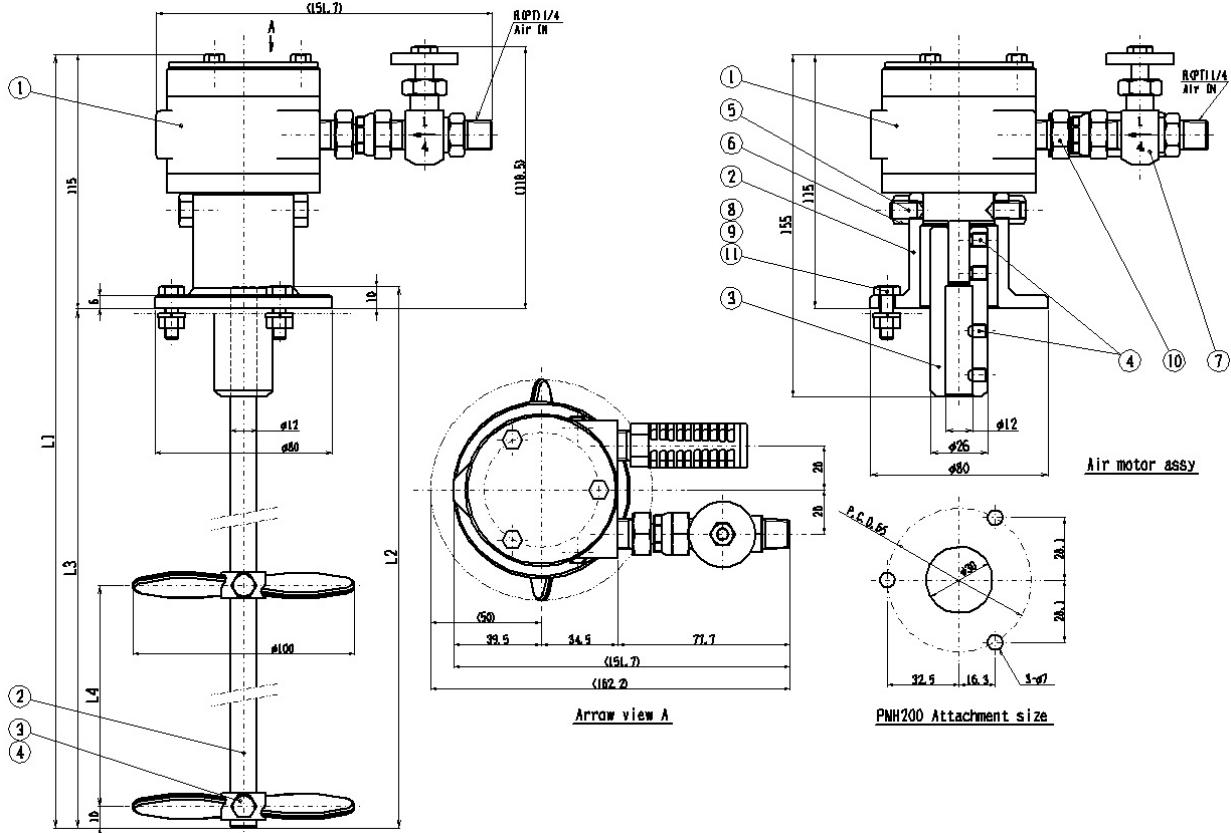
Rotational speed and air consumption at different air supply rates

With two ϕ 100mm, double-bladed propellers

Under no load (for reference)			In water		
Air supply pressure (MPa)	Rotational speed (rpm)	Air consumption (NL/min)	Air supply pressure (MPa)	Rotational speed (rpm)	Air consumption (NL/min)
0.1	3,500	71	0.1	500	49
0.2	6,500	153	0.2	800	77
0.3	8,000	230	0.3	1,000	108

Exploded Diagram and Names of Parts

PMH200
1104-□



ASSY No.	No.2 Shaft	L1	L2	L3	L4	REMARKS
1104	1114-004	415	310	300	100	for 20L
1104-2	1114-104	485	380	370	150	for old 40L
1104-3	1114-204	535	430	420	200	for old 60L
1104-4	1114-304	455	350	340	150	C1, for 40L
1104-6	1114-404	635	530	520	250	C1, for 60L

Compact, high-speed agitator PMH200

No.	Part number	Part name	Qty	Remarks
1	1104A	Air motor set	1set	
2	Refer to Table1	Shaft	1	
3	1104-005	Propeller	2	
4	01-10610	Hex bolt	2	

Table 1 Shaft Table

PMH200 Part number	Shaft Part number	Remarks
1104	1114-004	for 20L
1104-2	1114-104	for old 40L
1104-3	1114-204	for old 60L
1104-4	1114-304	C1, for 40L
1104-6	1114-404	C1, for 60L

Air motor set <1104A>

No.	Part number	Part name	Qty	Remarks
1	321-0002	Air motor	1set	
2	1104-002	Flange	1	
3	1114-003	joint	1	
4	86-70608	Hex socket screw	4	
5	85-50815	Hex socket screw	2	
6	15-10800	Hex nut	2	
7	304-0007	Needle valve	1	
8	01-70620	Hex bolt	3	
9	41-70600	Spring lock washer	3	
10	3204-122	Male-female union coupling	1	
11	15-70600	Hex nut	3	

Warranty

ASAHI SUNAC CORPORATION (the “Company”) shall provide the original purchaser (the “Purchaser”) with warranty service for a period of 6months from the date of purchase of the product, as follows:

- Should you find defects in design or workmanship with regard to parts, ship them back to the Company, with freight prepaid. The Company shall repair or replace the parts free of charge and reimburse the freight charges, provided that, as a result of an inspection and investigation of the parts conducted by the Company, the defects are deemed to be attributable to the factors within the Company’s responsibility.
- In the following cases, free after-sales service is not provided.
 1. Failure resulting from an inappropriate method of installing this equipment.
 2. Failure resulting from a use method not conforming to this instruction manual or mishandling.
 3. Failure resulting from insufficient maintenance management of this equipment and incorrect handling such as non-conformance to the procedures specified in this instruction manual.
 4. Failure resulting from unauthorized alteration or structure change of this equipment without the Company’s consent.
 5. Failure due to force majeure such as earthquake, disaster, flood disaster or lightening.
 6. Warranty for consumables worn or deteriorated even in the case where this equipment is used correctly.
 7. Repair after the machine has been used outside Japan, and shipping cost.
 8. In addition to the above, failure due to circumstances beyond our control.
- As for items such as parts purchased by the Company from another manufacturer, the warranty of that manufacturer shall apply.
- As for any parts deemed to be defective, the Company shall not be held liable for any expenses beyond the provision of repair or replacement parts free of charge.
- The Company shall not be held liable for any damage to the Purchaser caused by factors not attributable to the Company, such as misuse of product, etc.

【MEMO】

-
- When a transfer of title of this equipment takes place, please see to it that this Operation and Maintenance Manual is handed over to the new owner.
 - This equipment is manufactured in compliance with the Laws and Regulations of Japan.
In the rare eventuality of this equipment being used outside Japan, compliance with the safety standards of the relevant countries is of course mandatory.
-

13th Edition: December 21, 2022

ASAHI SUNAC CORPORATION

HEAD OFFICE
5050, SHINDENBORA, ASAHIMAE-CHO,
OWARIASAH, AICHI PREF. 488-0852, JAPAN
PHONE +81-561-52-0717 FAX +81-561-54-8847

URL : www.sunac.co.jp
E-mail : ctrd01@sunac.co.jp

Sales office



English



Chinese

13th Edition: December 21, 2022