

Medium-size High-speed Agitator*PMH500(S)*

This manual contains important information on warnings and cautions. Read the manual thoroughly before starting to operate the pump, and follow the instructions. Always keep the manual handy until such time as the pump is no longer being used. If your manual is lost or worn badly, do not hesitate to contact our agency which is closest to you, or the Asahi Sunac Corporation, directly, and ask us to send you a new one.

PNEUMATIC DIAPHRAGM PUMP

Thank you very much for buying our product.

Before you use this equipment, please carefully read the Operation and Maintenance Manual.

Please pay your extra attentions to the articles concerning safety warnings and cautions, so that you may be able to operate the equipment safely and in a way that you get the most out of it.

Specifications

Operating air pressure	0.1 to 0.5MPa
Rotational speed	380 to 1,500rpm in water (at air supply pressure between 0.1 and 0.5MPa Max.)
Air motor output	3/4HP
Air consumption (max.)	400L/min
Air inlet diameter	R (PT) 1/4

※The minimum operating air pressure depends on the paint viscosity.

Operating procedure

- ①Connect an air hose to the PMH500(S) body.
- ②Open (rotate counterclockwise) the needle valve set on the air motor and run the agitator while adjusting its rotational speed.
- ③Close (rotate clockwise) the needle valve (air supply) to stop rotation, or further open to increase the rotational speed.

Precautionary notes

- ①Do not run the agitator at a higher speed with nothing in it.
- ②Do not suddenly increase the rotational speed during operation.
※Doing what is prohibited in ① or ② may cause damage to the air motor.
- ③Never remove the rotating agitator from the material can or touch the rotating propellers.
- ④Please use and refuel the lubricator.

The lubricator should be adjusted to feed one drop of oil for every 1400 to 2100 NL of air going through the motor. Use a detergent SAE#10 automotive engine oil.

- ⑤Do not change or modify the propeller and shaft as it may cause a failure.

Rotational speed and air consumption at different air supply rates

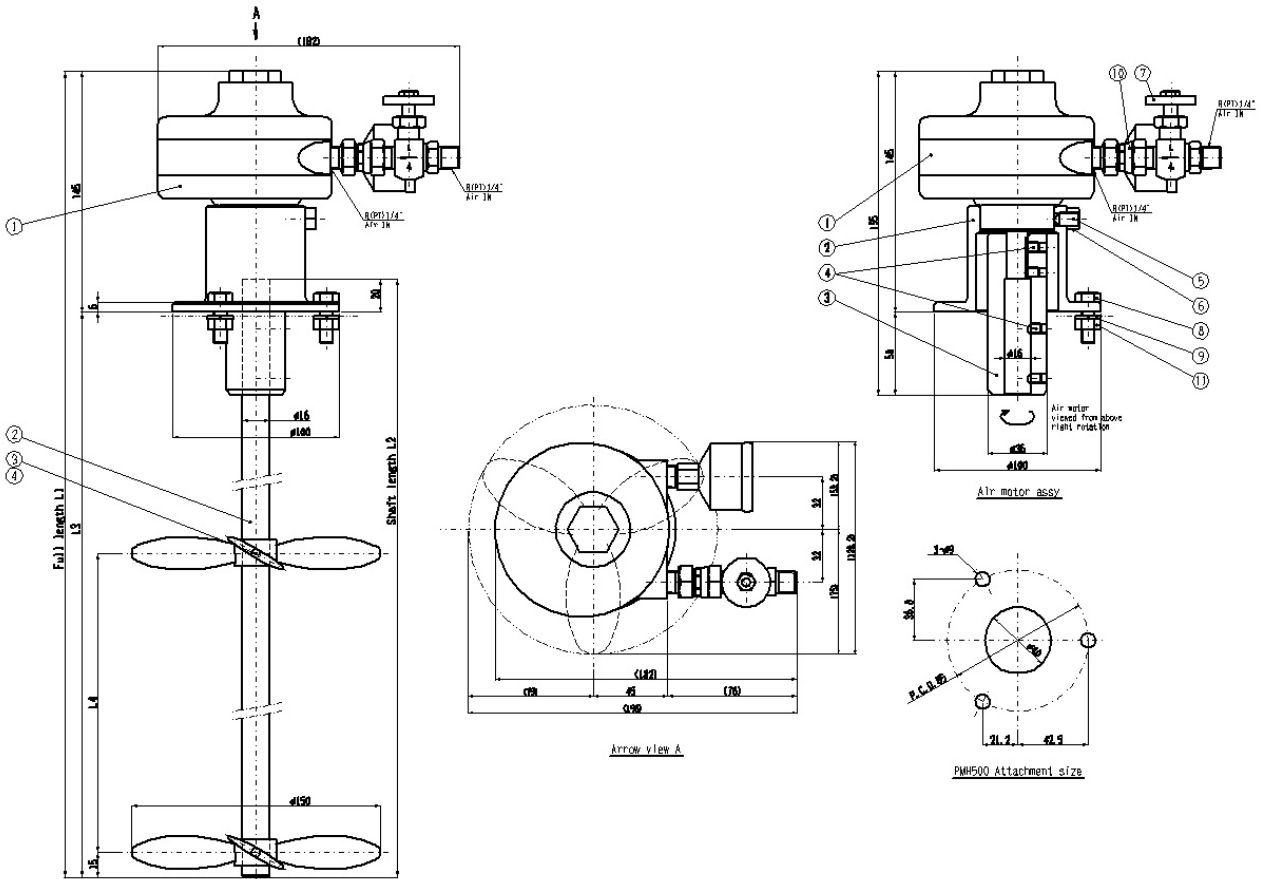
With two Φ 150mm, triple-bladed propellers.

Under no load (for reference)			In water		
Air supply pressure (MPa)	Rotational speed (rpm)	Air consumption (L/min)	Air supply pressure (MPa)	Rotational speed (rpm)	Air consumption (L/min)
0.1	2,300	136	0.1	380	77
0.2	3,500	264	0.2	950	162
0.3	4,000	378	0.3	1,100	255
0.4	4,800	493	0.4	1,300	356
0.5	5,200	600	0.5	1,500	432

Exploded Diagram and Names of Parts

PMH500

1105-□



ASSY No.	No.2 Shaft	L1	L2	L3	L4	REMARKS
1105	1115-004	565	440	420	200	for 60L
1105-1	1115-104	715	590	570	250	old, for 80L
1105-2	1115-204	665	540	520	250	for 100L
1105-3	1115-304	765	640	620	300	for 120L
1105-4	1115-404	945	820	800	350	for 200L
1105-5	1115-504	515	390	370	180	old, for 40L
1105-6	1115-604	485	360	340	180	C1, for 40L
1105-7	1115-704	645	520	500	250	C1, for 80L

Medium-size high-speed agitator PMH500

No.	Part No.	Part name	Q'ty	Remarks
1	1105A	Air motor set	1set	
2	Refer to Table 1	Shaft	1	
3	1105-005	propeller	2	
4	01-10612	Hex bolt	2	

Air motor set <1105A>

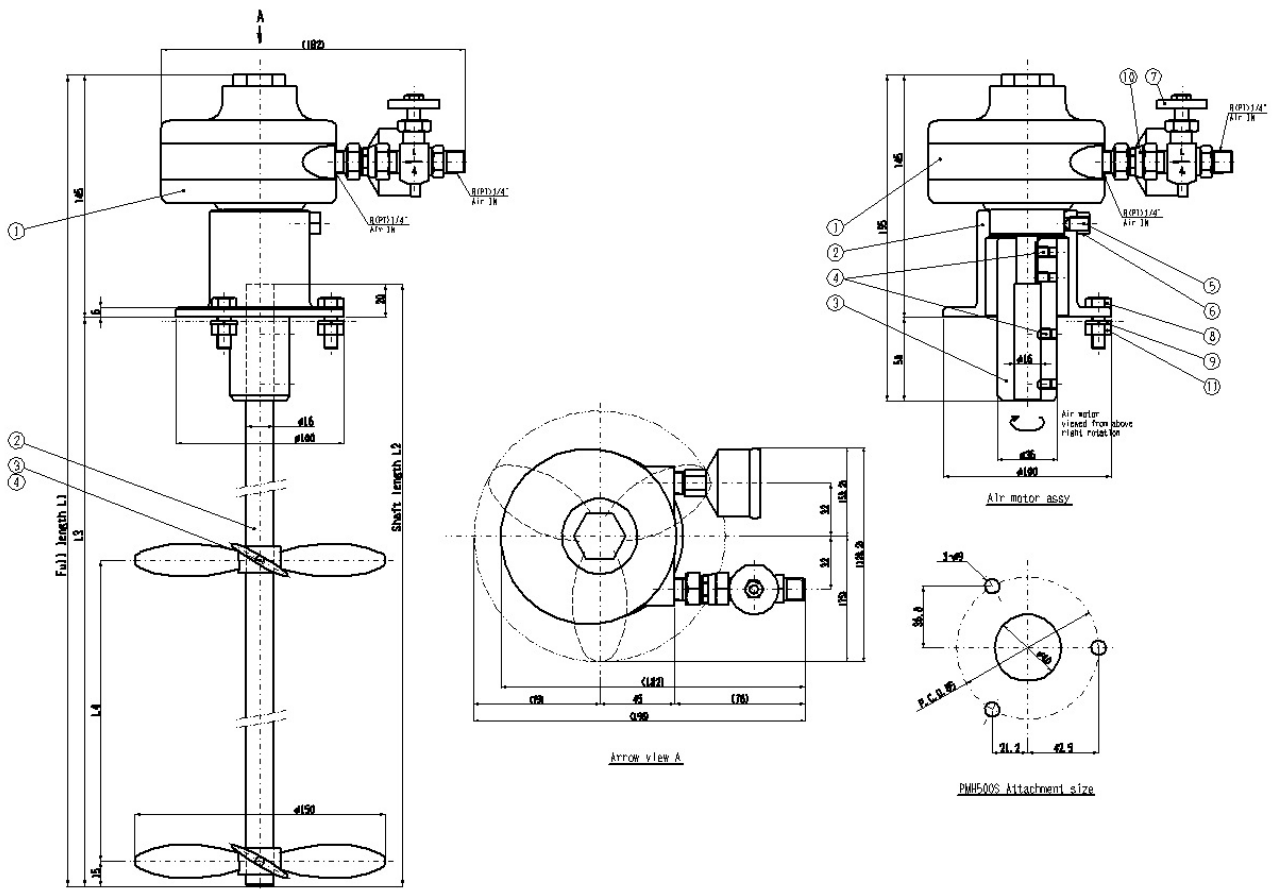
No.	Part No.	Part name	Q'ty	Remarks
1	321-0003	Air motor	1set	
2	1105-002	Flange	1	
3	1115-003	Joint	1	
4	86-70608	Hex socket screw	4	
5	85-50815	Hex socket screw	2	
6	15-10800	Hex nut	2	
7	304-0007	Needle valve	1	
8	01-70825	Hex bolt	3	
9	41-70800	Spring lock washer	3	
10	3204-122	Male-female union coupling	1	
11	15-70800	Hex nut	3	

Table 1 Shaft Table

PMH500 Part No.	Shaft Part No.	Remarks
1105	1115-004	for 60L
1105-1	1115-104	old, for 80L
1105-2	1115-204	for 100L
1105-3	1115-304	for 120L
1105-4	1115-404	for 200L
1105-5	1115-504	old, for 40L
1105-6	1115-604	C1, for 40L
1105-7	1115-704	C1, for 80L

PMH500S

1115-□



ASSY No.	No.2 Shaft	L1	L2	L3	L4	REMARKS
1115	1115-004	565	440	420	200	for 60L
1115-1	1115-104	715	590	570	250	old, for 80L
1115-2	1115-204	665	540	520	250	for 100L
1115-3	1115-304	765	640	620	300	for 120L
1115-4	1115-404	945	820	800	350	for 200L
1115-5	1115-504	515	390	370	180	old, for 40L
1115-6	1115-604	485	360	340	180	C2, for 40L
1115-7	1115-704	645	520	500	250	C2, for 80L

Medium-size high-speed agitator PMH500S

No.	Part No.	Part name	Q'ty	Remarks
1	1105A	Air motor set	1set	
2	Refer to Table 1	Shaft	1	
3	1115-005	propeller	2	
4	01-70612	Hex bolt	2	

Air motor set <1105A>

No.	Part No.	Part name	Q'ty	Remarks
1	321-0003	Air motor	1set	
2	1105-002	Flange	1	
3	1115-003	Joint	1	
4	86-70608	Hex socket screw	4	
5	85-50815	Hex socket screw	2	
6	15-10800	Hex nut	2	
7	304-0007	Needle valve	1	
8	01-70825	Hex bolt	3	
9	41-70800	Spring lock washer	3	
10	3204-122	Male-female union coupling	1	
11	15-70800	Hex nut	3	

Table 1 Shaft Table

PMH500S Part No.	Shaft Part No.	Remarks
1115	1115-004	for 60L
1115-1	1115-104	old, for 80L
1115-2	1115-204	for 100L
1115-3	1115-304	for 120L
1115-4	1115-404	for 200L
1115-5	1115-504	old, for 40L
1115-6	1115-604	C2, for 40L
1115-7	1115-704	C2, for 80L

Warranty

ASAHI SUNAC CORPORATION (the “Company”) shall provide the original purchaser (the “Purchaser”) with warranty service for a period of 6months from the date of purchase of the product, as follows:

- Should you find defects in design or workmanship with regard to parts, ship them back to the Company, with freight prepaid. The Company shall repair or replace the parts free of charge and reimburse the freight charges, provided that, as a result of an inspection and investigation of the parts conducted by the Company, the defects are deemed to be to attributable to the factors within the Company’s responsibility.

- In the following cases, free after-sales service is not provided.
 1. Failure resulting from an inappropriate method of installing this equipment.
 2. Failure resulting from a use method not conforming to this instruction manual or mishandling.
 3. Failure resulting from insufficient maintenance management of this equipment and incorrect handling such as non-conformance to the procedures specified in this instruction manual.
 4. Failure resulting from unauthorized alteration or structure change of this equipment without the Company’s consent.
 5. Failure due to force majeure such as earthquake, disaster, flood disaster or lightening.
 6. Warranty for consumables worn or deteriorated even in the case where this equipment is used correctly.
 7. Repair after the machine has been used outside Japan, and shipping cost.
 8. In addition to the above, failure due to circumstances beyond our control.

- As for items such as parts purchased by the Company from another manufacturer, the warranty of that manufacturer shall apply.

- As for any parts deemed to be defective, the Company shall not be held liable for any expenses beyond the provision of repair or replacement parts free of charge.

- The Company shall not be held liable for any damage to the Purchaser caused by factors not attributable to the Company, such as misuse of product, etc.

【MEMO】

-
- When a transfer of title of this equipment takes place, please see to it that this Operation and Maintenance Manual is handed over to the new owner.
 - This equipment is manufactured in compliance with the Laws and Regulations of Japan.
In the rare eventuality of this equipment being used outside Japan, compliance with the safety standards of the relevant countries is of course mandatory.
-

12th Edition: December 21, 2022

ASAHI SUNAC CORPORATION

HEAD OFFICE
5050, SHINDENBORA, ASAHIMAE-CHO,
OWARIASAHI, AICHI PREF. 488-0852, JAPAN
PHONE +81-561-52-0717 FAX +81-561-54-8847

URL : www.sunac.co.jp
E-mail : ctrd01@sunac.co.jp

Sales office



English



Chinese

12th Edition: December 21, 2022